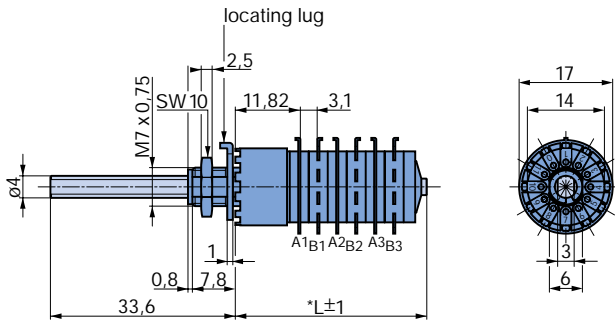


Rotary Switches Type 06

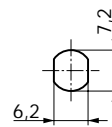
- 12 position switch
- compact multi wafer switch for front panel mounting
- life expectancy > 25 000 switching cycles
- steel spindle-shaft and metal bush for rugged applications
- gold flash contact standard



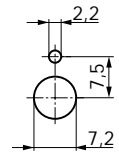
With solder eyelets



Front panel cut out



without locating lug



with locating lug

SW = Key spanner

Ax = common contact half of wafer x
Bx = discrete contact half of wafer x

*L = 1 wafer 21 mm
2 wafers 28 mm
3 wafers 35 mm
4 wafers 42 mm
per wafer more +7 mm

Possible modifications on request

- special type of shaft (length, form)
- special torque
- special end stop
- shortened bush
- hollow shaft/inner shaft

Stop screws M 1,2 (package of 10 pieces)	4224-11
Stop screws M 1,2 (package of 100 pieces)	4224-10

Indexing angle 30°, shorting

Contact arrangement from spindle/shaft side common contact half	discrete contact half	Function (Pole x Position)	Number of wafers	gold flash	gold 3 μm
		1 x 12 o.A. 2 x 12 o.A. 3 x 12 o.A. 4 x 12 o.A.	1 2 3 4	06-1100 06-2100 06-3100 06-4100	06-1103 06-2103 06-3103 06-4103
		1 x 12 2 x 12 3 x 12 4 x 12	1 2 3 4	06-1110 06-2110 06-3110 06-4110	06-1113 06-2113 06-3113 06-4113
		2 x 6 4 x 6 6 x 6 8 x 6	1 2 3 4	06-1260 06-2260 06-3260 06-4260	06-1263 06-2263 06-3263 06-4263
		3 x 4 6 x 4 9 x 4 12 x 4	1 2 3 4	06-1340 06-2340 06-3340 06-4340	06-1343 06-2343 06-3343 06-4343
		4 x 3 8 x 3 12 x 3 16 x 3	1 2 3 4	06-1430 06-2430 06-3430 06-4430	06-1433 06-2433 06-3433 06-4433
		Binary code 0-11	2	06-2910	06-2913

packing unit : 10 pieces

Indexing angle 30°, non-shorting

Contact arrangement from spindle/shaft side common contact half	discrete contact half	Function (Pole x Position)	Number of wafers	gold flash	gold 3 μm
		1 x 12 u.o.A. 2 x 12 u.o.A. 3 x 12 u.o.A. 4 x 12 u.o.A.	1 2 3 4	06-1101 06-2101 06-3101 06-4101	06-1104 06-2104 06-3104 06-4104
		1 x 12 u. 2 x 12 u. 3 x 12 u. 4 x 12 u.	1 2 3 4	06-1111 06-2111 06-3111 06-4111	06-1114 06-2114 06-3114 06-4114
		2 x 6 u. 4 x 6 u. 6 x 6 u. 8 x 6 u.	1 2 3 4	06-1261 06-2261 06-3261 06-4261	06-1264 06-2264 06-3264 06-4264
		3 x 4 u. 6 x 4 u. 9 x 4 u. 12 x 4 u.	1 2 3 4	06-1341 06-2341 06-3341 06-4341	06-1344 06-2344 06-3344 06-4344
		4 x 3 u. 8 x 3 u. 12 x 3 u. 16 x 3 u.	1 2 3 4	06-1431 06-2431 06-3431 06-4431	06-1434 06-2434 06-3434 06-4434
		Binary code 0-11 u.	2	06-2911	06-2914

Contact arrangement from the spindle side u. = non-shorting, o.A. = without end stop, can **not** be adjusted subsequently!

packing unit : 10 pieces

1 mm = 0.04 inch, 1 inch = 25.4 mm

Items available from stock!