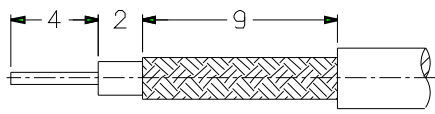
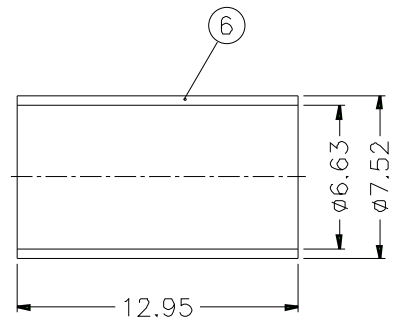
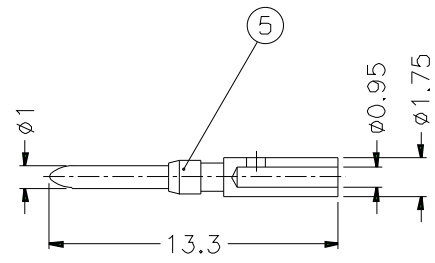
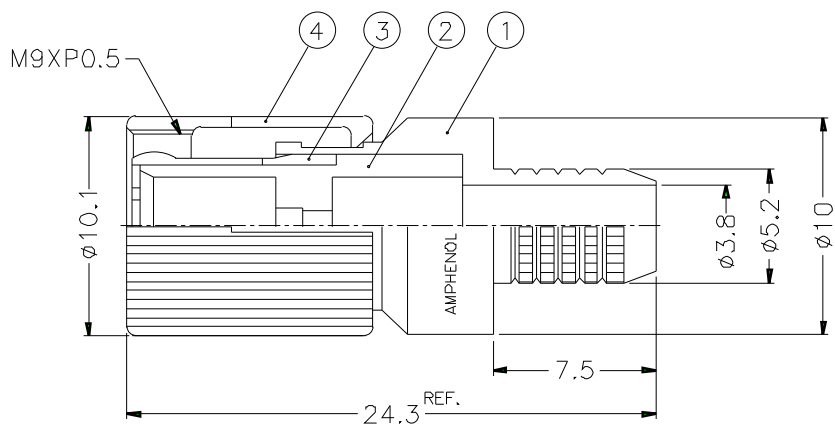


1	2		3	4	5	6	7	8
REVISIONS								
ISS	ZONE	DESCRIPTION\PER REQUEST\DATE						



CABLES: - L910/12
 - L910/13
 - SIRTI 214

RECOMMENDED
 CABLE STRIPPING DIM'S



- FERRULE CRIMPING TOOLS P/N
 227-944 (M22520/5.01)
 227-1221-19A (M22520/5.19) HEX: 6.47 L=10.16
- INNER CONTACT CRIMPING TOOL P/N
 413 SP 00 ADJUST TO 6
- CONNECTOR ACCORDING TO NF C 93-570, DIN 47-295, CEI 169-13
- PACKAGING IN BAG WITH COMMERCIAL PART NUMBER AND DATE CODE

					DIMENSIONS ARE IN MILLIMETERS				PART NO. 156 929 03		<h1>Amphenol</h1>				
									APPROVED					DATE 10-11-01'	
									CHECKED					DATE 10-11-01'	
									DRAWN					DATE 10-11-01'	
									FILE NO.		TITLE 1.6/5.6 75Ω STRAIGHT PLUG, CRIMP TYPE				
											DRAWING NO.				
											ITEM NO.				

NO.	DESCRIPTION	MATERIAL	FINISH	Q'TY	DRAWING NO.
6	FERRULE	COPPER	NICKEL	1	
5	CONTACT PIN	BRASS	GOLD	1	
4	SHELL	BRASS	NICKEL	1	
3	OUTER CONTACT	BRONZE	GOLD	1	
2	INSULATOR	TEFLON	NATURAL	1	
1	BODY	BRASS	NICKEL	1	