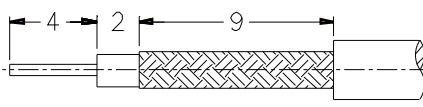
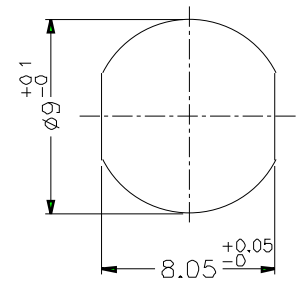


1 2 3 4 5 6 7 8

REVISIONS		
ISS	ZONE	DESCRIPTION\PER REQUEST\DATE

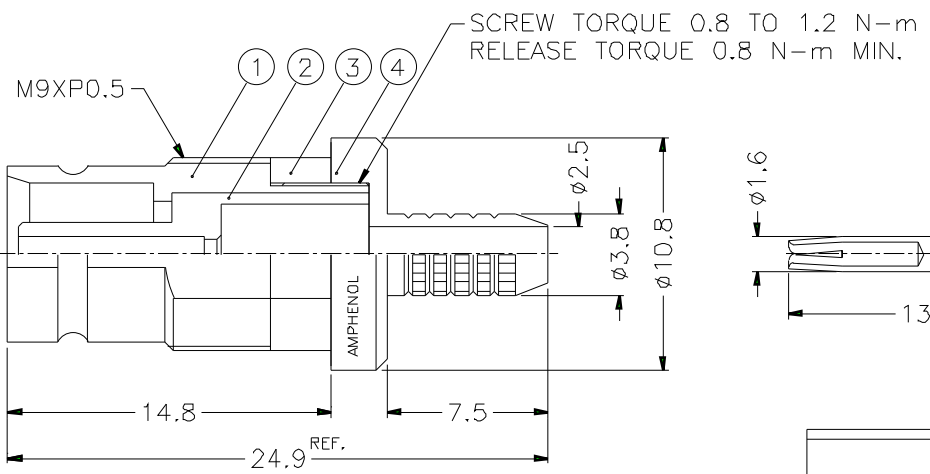
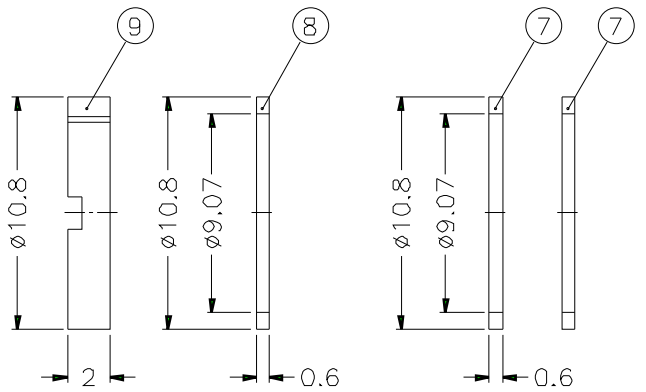


RECOMMENDED CABLE STRIPPING DIM'S

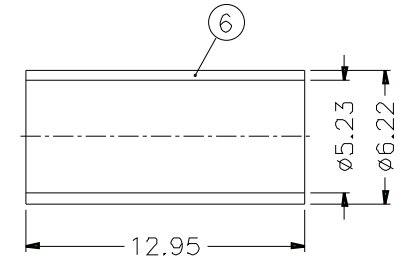
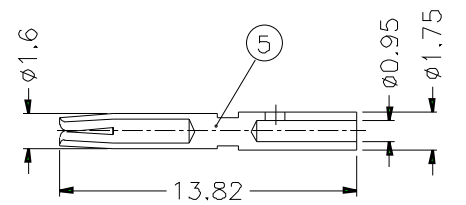


RECOMMENDED MOUNTING HOLE

- FERRULE CRIMPING TOOLS P/N  
227-944(M22520/5-01)  
227-1221-19B(M22520/5-19B) HEX: 5.41 L=10.16
- INNER CONTACT CRIMPING TOOL P/N  
413 SP 00 ADJUST TO 5
- PACKAGING IN BAG WITH COMMERCIAL PART NUMBER AND DATE CODE
- CONNECTOR ACCORDING TO NFC 93-570, DIN 47-295, CEI 169-13, UTEC 93-570



SCREW TORQUE 0.8 TO 1.2 N-m  
RELEASE TORQUE 0.8 N-m MIN.



CABLE: L910/16  
TR-SP .110  
PANEL THICKNESS:  
1. 1.2mm(GROUNDED OR ISOLATED)  
2. 3mm(ONLY GROUNDED, WITHOUT WASHERS  
⑦ AND ⑧)

9	NUT	BRASS	NICKEL	1	
8	WASHER	BRASS	NICKEL	1	
7	ISOLATING WASHER	EOPXY GLASS -FR4 TYPE	NATURAL	2	
6	FERRULE	COPPER	NICKEL	1	
5	CONTACT PIN	BEUC	GOLD	1	
4	BARREL	BRASS	NICKEL	1	
3	RING	PSU.20% G.F.	GREEN	1	
2	INSULATOR	TEFLON	NATURAL	1	
1	BODY	BRASS	GOLD	1	
NO.	DESCRIPTION	MATERIAL	FINISH	Q'TY	DRAWING NO.

DIMENSIONS ARE IN MILLIMETERS				PART NO. 156 931 02	
				APPROVED	DATE 10-11-01'
				CHECKED	DATE 10-11-01'
				DRAWN	DATE 10-11-01'
				FILE NO.	

<b>Amphenol</b>	
TITLE 1.6/5.6 75Ω BULKHEAD MOUNT JACK	
DRAWING NO.	
ITEM NO.	

1 2 3 4 5 6 7 8