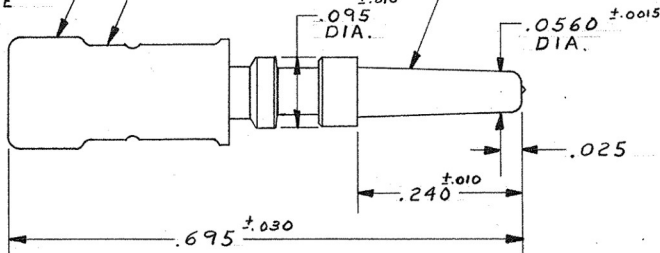


© 1960 BY AMP INCORPORATED. ALL RIGHTS RESERVED. AMP PRODUCTS COVERED BY PATENTS AND/OR PATENTS PENDING.

SLEEVE - COLOR
SEE TABLE

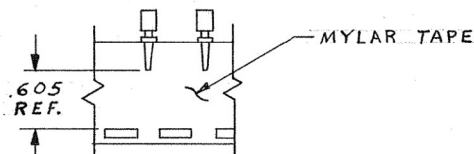
SLEEVE - MATL:
NYLON

.061 ±.008 TAPER PER
INCH ON DIA.

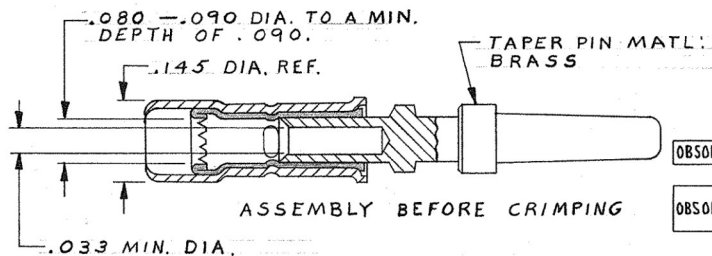


ZONE	LTR	REVISIONS DESCRIPTION	DATE	APPROVED
N-1		REDRAWN AND REVISED 1678	3-15-68	M.S. d.H
9347	P	LOC SWASAB DIST 12 WAS 39	11-7-72	JF
R		OBSELETE - G, .0001 BRIGHT TIN WAS .0002	1-31-79	D.H
S		BRIGHT TIN-LEAD WAS BRIGHT TIN, EA 1818	6-18-81	DS
T		085-7 E-9	11-22-86	RS
U		REV PER DF-0357	6/16/88	MS
V		REV PER OH14-0139-05	1-26-06	PY

1. WIRE RANGE: #24-#22
INS. RANGE: .040-.080 DIA.

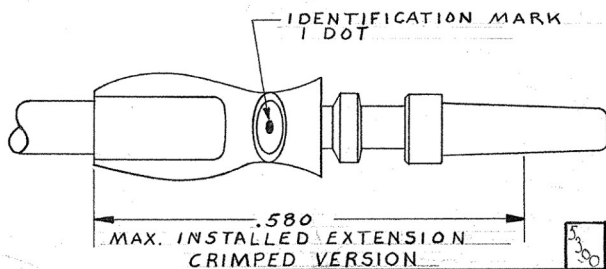


TAPE MOUNTED ASSY NO'S.
42574-8 THRU 1-42574-1.



ASSEMBLY BEFORE CRIMPING

PART NO.	FINISH	SLEEVE-COLOR
5-42574-1	.0001 MATTE TIN	YELLOW
1-42574-1	.0002 GOLD OVER .000050 NICKEL	YELLOW
1-42574-0	.000030 GOLD OVER .000050 NICKEL	
OBSELETE 42574-9	SILVER-.0002 THICK	
42574-8	BRIGHT TIN-LEAD .0001 THICK	YELLOW
OBSELETE 42574-7	.000030 GOLD OVER .000050 NICKEL	BLACK
42574-6	.000030 GOLD OVER .000050 NICKEL	RED
42574-5	.0002 GOLD OVER .000050 NICKEL	YELLOW
42574-4	.0001 GOLD OVER .0001 NICKEL	
42574-3	.000030 GOLD OVER .000050 NICKEL	
OBSELETE 42574-2	SILVER-.0002 THICK	
42574-1	BRIGHT TIN-LEAD .0001 THICK	YELLOW



MAX. INSTALLED EXTENSION
CRIMPED VERSION

UNLESS OTHERWISE SPECIFIED DIM. ARE IN INCHES. TOLERANCES ON: DECIMALS: ±.015 ANGLES: ± #	CONTRACT NO. 3-15-68	AMP AMP INCORPORATED HARRISBURG, PENNSYLVANIA
DR M Smith	CHK R S Heide 5/10/68	
MATERIAL SEE CALLOUT	APPR R Smith 5/15/68	NAME PIN, TAPER, "53" SERIES, P.I.D.G.
AMP INFO	DSGN APPD W Feeler 5-15-68	SIZE B CODE IDENT NO. 00779 NUMBER 42574
LOC DF	HEAT TREAT #	SCALE 8-1 WT CALC ACTUAL SHEET
FINISH SEE TABLE	OTHER APPD	

CUSTOMER DRAWING 1