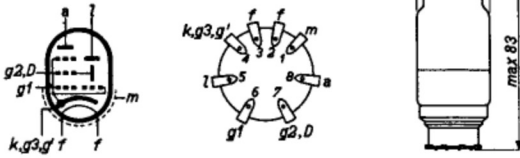


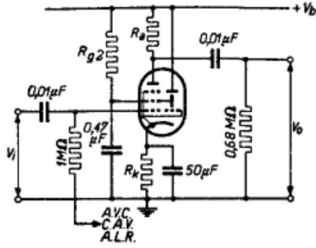
L.F. PENTODE - TUNING INDICATOR  
 PENTHODE B.F.- INDICATRICE D'ACCORD  
 N.F. PENTHODE- ABSTIMMANZEIGER

Heating: indirect by A.C. or D.C.;  
 parallel or series supply  
 Chauffage: indirect par C.A. ou C.C.;  $V_f = 6,3$  V  
 alimentation en parallèle  $I_f = 0,200$  A  
 ou en série  
 Heizung: indirekt durch Wechsel-  
 oder Gleichstrom;  
 Parallel- oder Serienspeisung

Dimensions in mm  
 Dimensions en mm  
 Abmessungen in mm



Operating characteristics for use as L.F. amplifier  
 and tuning indicator  
 Caractéristiques d'utilisation comme amplificatrice  
 B.F. et indicatrice d'accord  
 Betriebsdaten als N.F. Verstärker und Abstimmzei-  
 ger



Vb = V <sub>l</sub>	=	250	V
Ra	=	130	kΩ
Rg2	=	350	kΩ
Rk	=	980	Ω
Vg1	=	-2	V
Ia	=	0,8	mA
Ig2	=	0,6	mA
I <sub>l</sub>	=	0,65	mA
Va	=	146	V
Vg2	=	40	V
Vo/V <sub>l</sub>	=	60	13
d <sub>tot</sub> (Vo = 5 V <sub>eff</sub> )	=	2	1,7 %
α	=	>70 <sup>c</sup>	<5 <sup>o</sup>

Limiting values  
Caractéristiques limites  
Grenzdaten

V <sub>a0</sub>	= max.	550 V
V <sub>a</sub>	= max.	300 V
W <sub>a</sub>	= max.	0,4 W
Vg <sub>20</sub>	= max.	550 V
Vg <sub>2</sub>	= max.	300 V
Wg <sub>2</sub>	= max.	0,4 W
V <sub>l0</sub>	= max.	550 V
V <sub>l</sub>	= max.	300 V
I <sub>k</sub>	= max.	5 mA
Rg <sub>1</sub>	= max.	3 MΩ
Rfk	= max.	20 kΩ
Vfk	= max.	100 V
Vg <sub>1</sub> (I <sub>g1</sub> = +0,3 μA)	= max.	-1,3 V



<b>page</b>	<b>EFM1 sheet</b>	<b>date</b>
1	1	1948.09.28
2	2	1948.09.28
3	FP	1999.07.04