

JC Series Connector



Table of contents

Product Characteristics.....	1
Product Specification.....	2
Contact Arrangements.....	2
Part Number Configuration.....	3
JC 1A.....	3
JC 2A.....	4
JC 6A.....	4
Exploded View.....	5
Panel Cut-out Dimension.....	6
Applicable Cable Size.....	6
Terminating Instruction.....	6

JC Series Connector

* Product Characteristics:

JC Series connectors are rugged light-weight, low cost, general purpose, circular connectors designed for use in various industrial applications. Small and compact with an aluminum alloy shell protected by gray nickel finish. JC connectors feature five key polarization and closed entry socket insulators for positive contact alignment and mating. The JC series is available in three shell styles and eight contact

arrangements accommodating up to twenty-four size 20 contacts. Plug and Receptacle shell styles will accommodate either pin or socket insulators. A threaded coupling design permits full engagement of the contacts even when the coupling nut is dis-engaged. This feature is useful for bench testing applications.

* Applications:

- * Broadcasting Equipment, * Measurement and Testing Equipment, * Medical Equipment,
* Multi-pin Power Connections, * Industrial Machinery, * Automatic Vending Machines.

* Features:

- Proven design**
Well established commercial metal shell circular connectors designed in accordance with JIS-C-5432 standard specification.
- Rugged, small, light-weight with metal shell protection**
An aluminum alloy shell ensures rugged protection of the connection.
- Smooth mating and stable function**
Closed-entry socket insulators guide pin contacts to socket contacts which ensure smooth mating of pins to socket contacts. Socket contacts are located deep within the insulators ensuring safety with finger test.
- Five key polarization**
Five key and key groove on the metal shell ensure polarization and contact alignment on mating.

ITT Cannon manufactures the highest quality products available in the marketplace; however these products are intended to be used in accordance with the specifications in this publication. Any use or application that deviates from stated operating specifications is not recommended and may be unsafe. No information and data contained in this publication shall be construed to create a liability on the part of ITT Cannon. Any new issue of this publication shall automatically invalidate and supersede any and all previous issues. **A limited warranty applies to ITT Cannon products. Except for obligations assumed by ITT Cannon under this warranty, ITT Cannon shall not be liable for any loss, damage, cost of repairs, incidental or consequential damages of any kind, whether or not based on express or implied warranty, contract, negligence, or strict liability arising in connection with the design, manufacture, sale, use, or repair of the products.** Product availability, prices and delivery dates are exclusively subject to our respective order confirmation form; the same applies to orders based on development samples delivered. This publication is not to be construed as an offer. It is intended merely as an invitation to make an offer. By this publication, ITT Cannon does not assume responsibility or any liability for any patent infringements or other rights of third parties which may result from its use. Reprinting this publication is generally permitted, indicating the source. However, ITT Cannon's prior consent must be obtained in all cases.

* Product Specifications:

Materials and Finishes:

Components	Materials	Finish
Shell, Barrel, Coupling nut, Cable clamp	Aluminum alloy	Nickel plating
Insulator	Thermosetting resin	UL94V-0 Colour; blue
Contacts	Copper alloy	Silver plating

Electrical Data:

Current rating:	#20 contact : 5 amps / #16 contact : 10 amps
Maximum operating voltage:	250 Vr.m.s. AC
Voltage endurance:	AC 1,000 Vr.m.s. 1-min
Insulating resistance:	more than 1,000 M ohms at 500 V DC
Contact resistance:	less than 5 M ohms
Contact termination:	Solder type

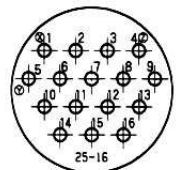
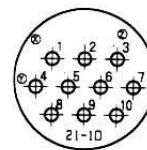
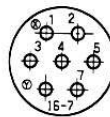
Mechanical Features:

Shell style:	1A Cable mounting coupling receptacle 2A Box mounting receptacle 6A Cable connecting plug
Shell size:	13, 16, 21 and 25 coupling : Threaded-JC
Polarization:	Five keys and key ways
Mating cycle:	500 times
Over-all mating & extraction force:	

Shell size	Pin counts	Spec.	Shell size	Pin counts	Spec.
13	5	less than 1.5Kgr.	13	3	less than 1.4Kgr.
16	10	less than 3.4Kgr.	16	7	less than 3.2Kgr.
21	16	less than 5.5Kgr.	21	10	less than 4.5Kgr.
25	24	less than 8.2Kgr.	25	16	less than 7.2Kgr.

* Contact Arrangements:

Face view of Pin Insert (Socket view is opposite)



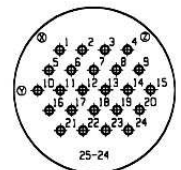
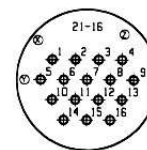
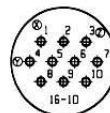
Shell Size
Number of Contacts
Service Rating

13-3
3 #16
10-amp, #16AWG

13-3
3 #16
10-amp, #16AWG

13-3
3 #16
10-amp, #16AWG

13-3
3 #16
10-amp, #16AWG



Shell Size
Number of Contacts
Service Rating

13-5
5 #20
5-amp, #20AWG

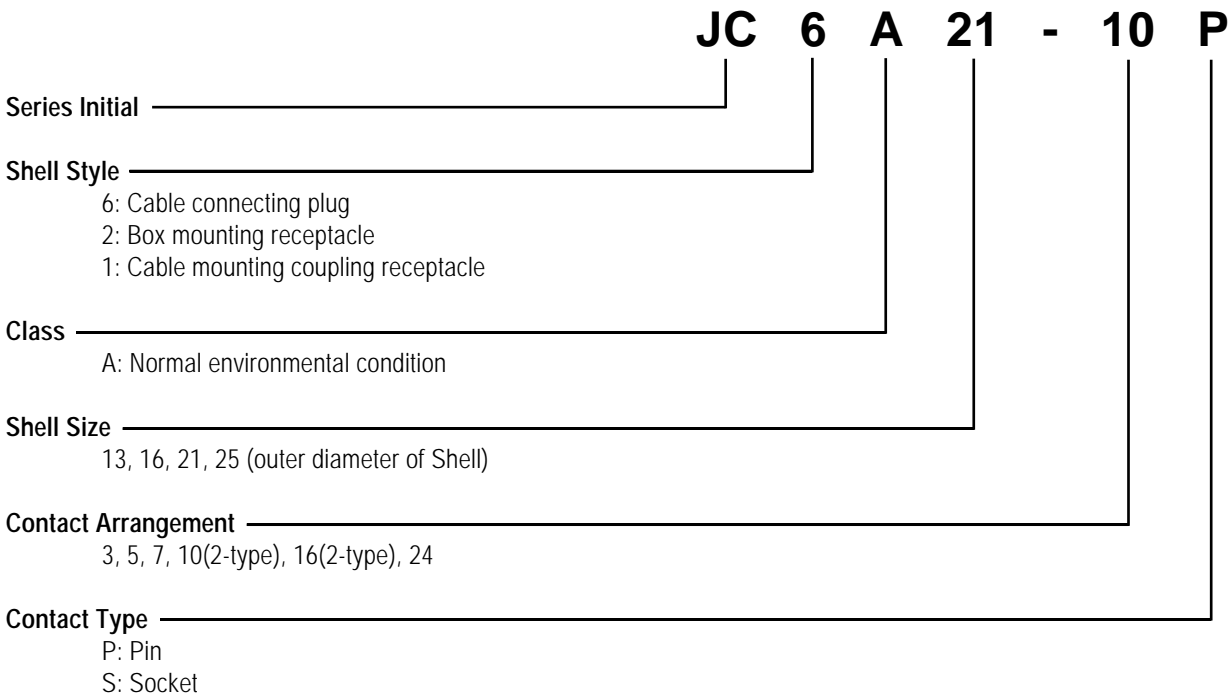
13-5
5 #20
5-amp, #20AWG

13-5
5 #20
5-amp, #20AWG

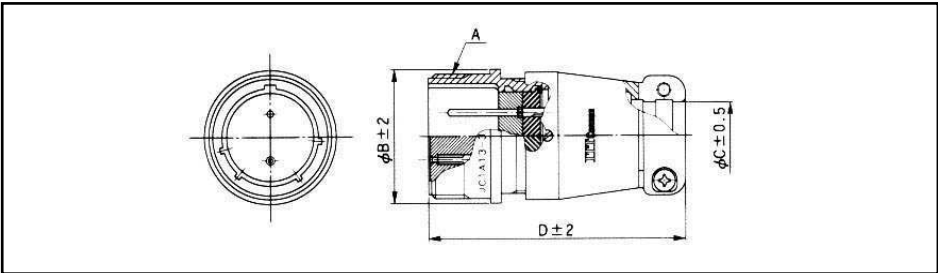
13-5
5 #20
5-amp, #20AWG

JC Series Connector

* Part Number Configuration:



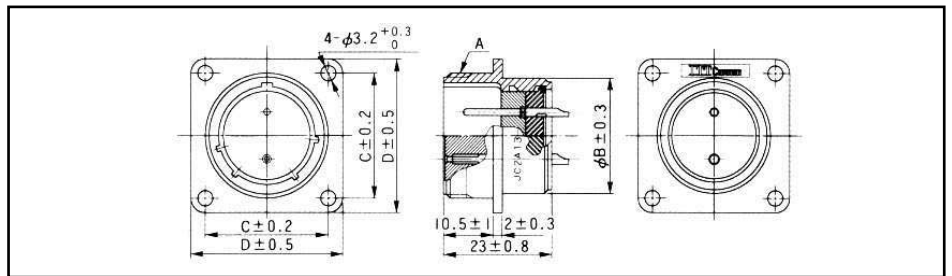
* JC 1A



Shell Size	Number of Contacts	Description	Parts Number	A	øB	øC	D
13	3	JC1A13-3P	127039-0033	M18x1	21	8	44.5
		JC1A13-3S	127039-0034				
	5	JC1A13-5P	127039-0035				
		JC1A13-5S	127039-0036				
16	7	JC1A16-7P	127039-0037	M22x1	25	12	47.5
		JC1A16-7S	127039-0038				
	10	JC1A16-10P	127039-0039				
		JC1A16-10S	127039-0040				
21	10	JC1A21-10P	127039-0041	M26x1	29	14	51.5
		JC1A21-10S	127039-0042				
	16	JC1A21-16P	127039-0043				
		JC1A21-16S	127039-0044				
25	16	JC1A25-16P	127039-0045	M30x1	33	18	54.5
		JC1A25-16S	127039-0046				
	24	JC1A25-24P	127039-0047				
		JC1A25-24S	127039-0048				

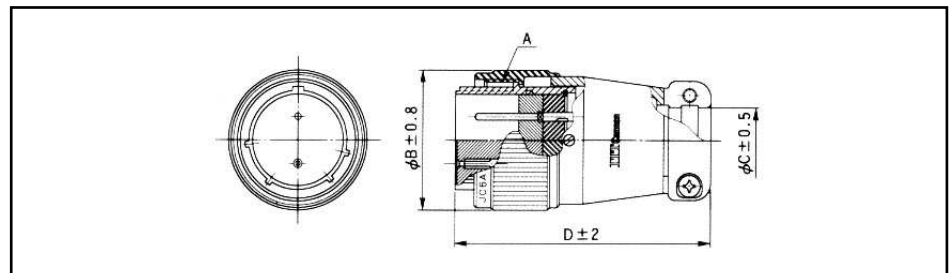
JC Series Connector

* JC 2A



Shell Size	Number of Contacts	Description	Parts Number	A	ϕB	ϕC	D
13	3	JC2A13-3P	127039-0017	M18x1	16	20	26
		JC2A13-3S	127039-0018				
	5	JC2A13-5P	127039-0019				
		JC2A13-5S	127039-0020				
16	7	JC2A16-7P	127039-0021	M22x1	20	23	29
		JC2A16-7S	127039-0022				
	10	JC2A16-10P	127039-0023				
		JC2A16-10S	127039-0024				
21	10	JC2A21-10P	127039-0025	M26x1	24	26	32
		JC2A21-10S	127039-0026				
	16	JC2A21-16P	127039-0027				
		JC2A21-16S	127039-0028				
25	16	JC2A25-16P	127039-0029	M30x1	28	29	35
		JC2A25-16S	127039-0030				
	24	JC2A25-24P	127039-0031				
		JC2A25-24S	127039-0032				

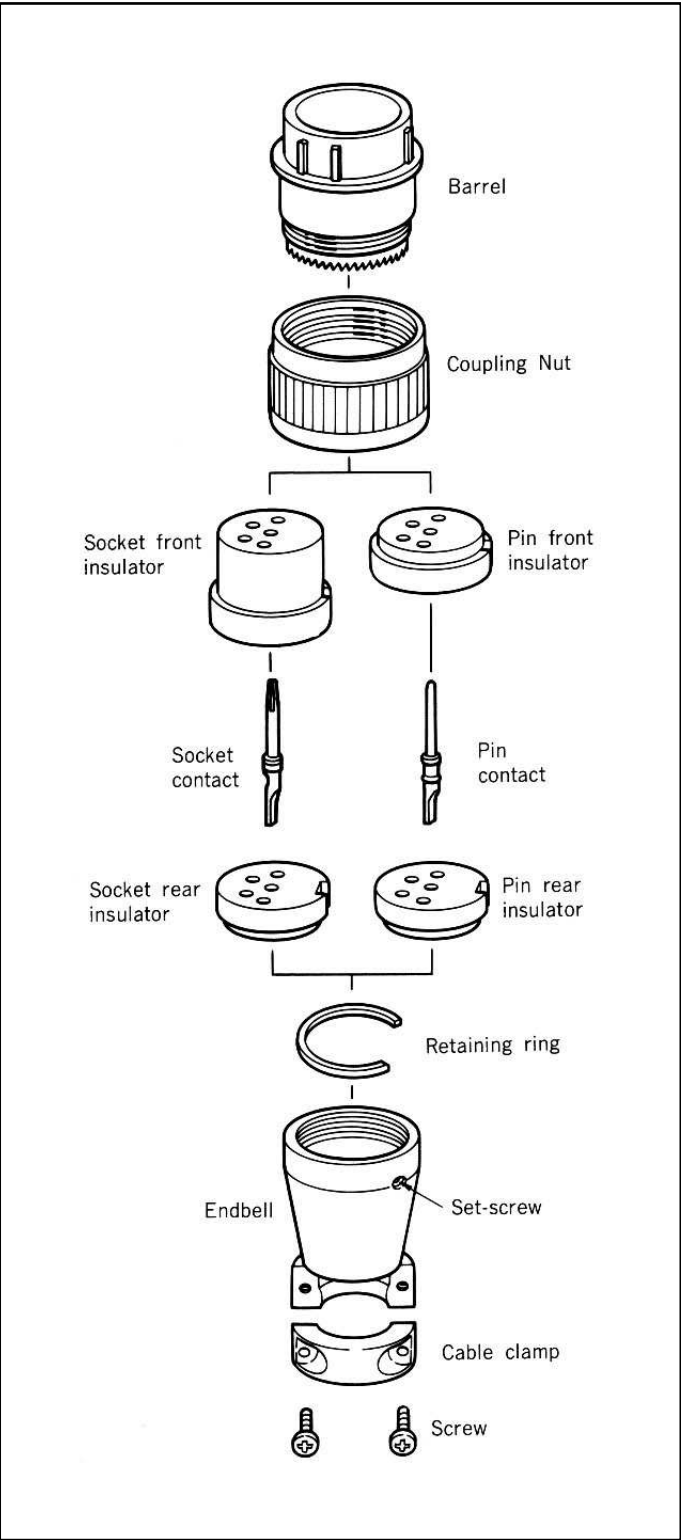
* JC 6A



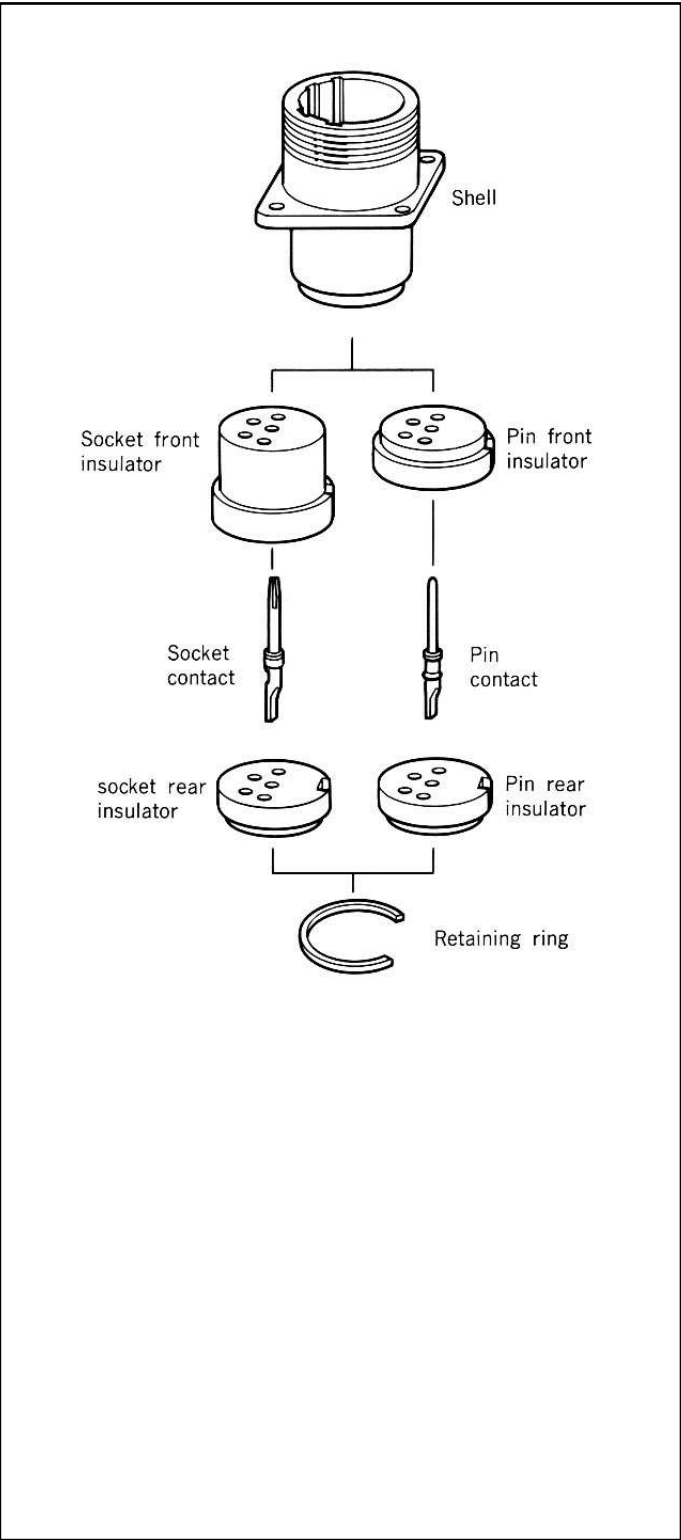
Shell Size	Number of Contacts	Description	Parts Number	A	ϕB	ϕC	D
13	3	JC6A13-3P	127039-0001	M18x1	21.2	8	46
		JC6A13-3S	127039-0002				
	5	JC6A13-5P	127039-0003				
		JC6A13-5S	127039-0004				
16	7	JC6A16-7P	127039-0005	M22x1	25.5	12	49
		JC6A16-7S	127039-0006				
	10	JC6A16-10P	127039-0007				
		JC6A16-10S	127039-0008				
21	10	JC6A21-10P	127039-0009	M26x1	29.7	14	53
		JC6A21-10S	127039-0010				
	16	JC6A21-16P	127039-0011				
		JC6A21-16S	127039-0012				
25	16	JC6A25-16P	127039-0013	M30x1	33.8	18	56
		JC6A25-16S	127039-0014				
	24	JC6A25-24P	127039-0015				
		JC6A25-24S	127039-0016				

JC Series Connector Exploded View

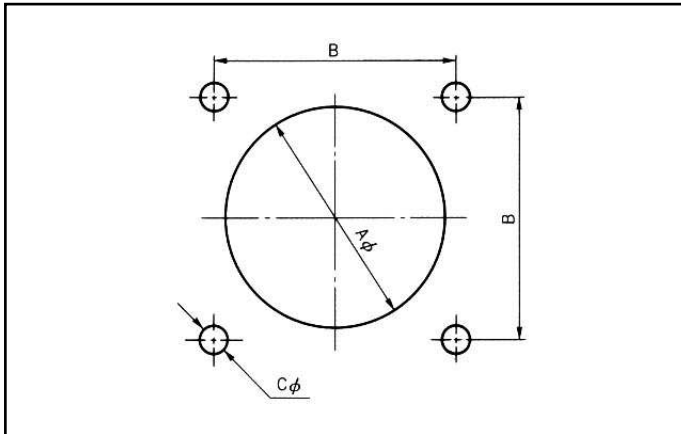
* Plug



* Receptacle



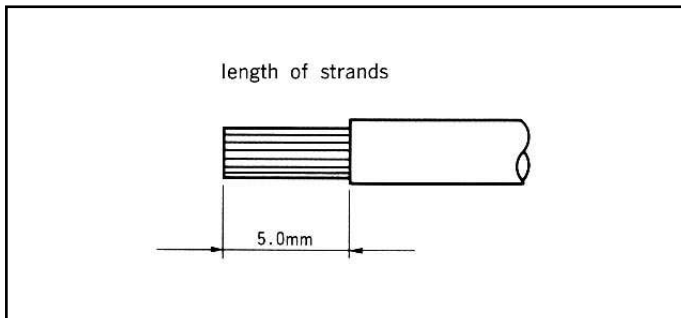
* Panel cut-out dimension (page 6)



Shell Size	Aø ±0.5	B ±0.2	Cø -0.3 -0
13	20	20	3.2
16	24	23	3.2
21	28	26	3.2
25	32	29	3.2

(note) In case of rear mounting, panel thickness should be less than 4.00 mm

* Applicable Cable Size



Contact Size	Cable AWG	Diameter of conductor
20	#20 or thinner	0.5mm ² or smaller
16	#16 or thinner	1.25mm ² or smaller

* Termination Instruction

Cable must come through Endbell in advance to termination.
Release the set-screw and remove Endbell from barrel of connector then insert the cable through the Endbell.
After completion of soldering termination, re-assemble Endbell to Barrel then tighten up set-screw.

