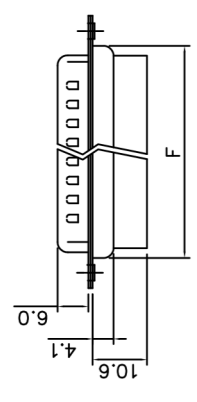
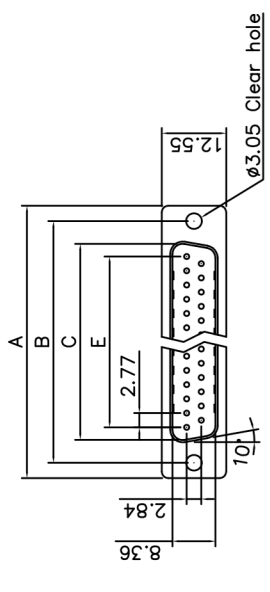


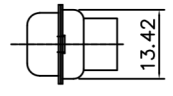
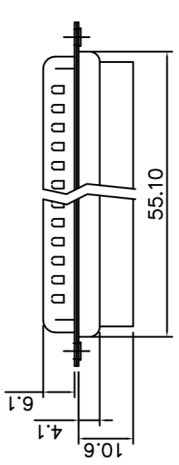
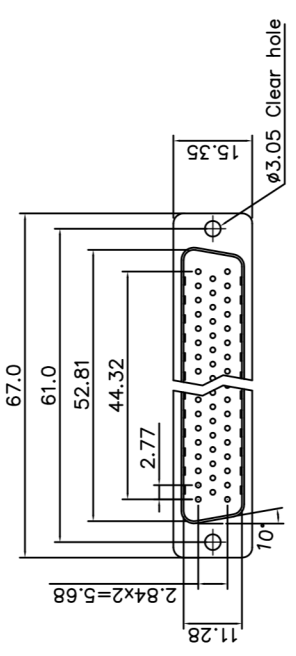
This document is the property of Amphenol Corporation and is delivered on a loan basis. It is not to be reproduced, stored in a retrieval system, or transmitted in any form or by any means, electronic, mechanical, photocopying, recording, or by any information storage and retrieval system, without the prior written permission of Amphenol Corporation. If you are not an authorized user, you are notified that no right is granted to disclose or use the information contained in this document.

Customer Drawing



Dimensions

Positions	A	B	C	E	F
9	30.81	24.99	16.92	11.08	19.20
15	39.20	33.30	25.25	19.39	27.70
25	53.05	47.04	38.96	33.24	41.10
37	69.40	63.50	55.42	49.86	57.30



REVISIONS				
SYM	ECN	DESCRIPTION	DATE	APPROVED
1	HK--	First Release Drawing	01/04/08	IP
2	HK--	Update the Drawing	07/15/10	IP
3	HK--	Update the Drawing	05/24/13	IP
4	HK--	Update the Drawing	06/19/13	IP
5	HK--	Add one dimension	10/28/14	IP
6	HK--	Add retention force	05/12/15	IP

D-SUB TECHNICAL DATA

SHELL : Steel, 100u" Tin over 50u" min Nickel over 50u" min Copper

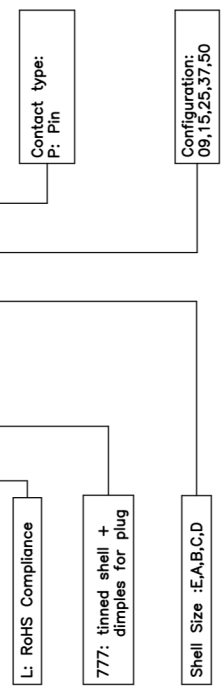
BODY : Front housing: PBT, UL94V-0, Color Black
Back housing: PA66, UL94V-0, Color Black

ELECTRICAL : Withstanding Voltage >1000 V RMS
Insulation resistance >1000 M Ohms

MECHANICAL : Terminal retention force: 2.27kg Min.
MARKING : Amphenol Logo

PRODUCT CODE

L 777 RR X XX P



UNLESS OTHERWISE SPECIFIED		APPROVAL		DATE	
TOLERANCES	METRIC	DRAWN	CHKD	DATE	DATE
U.S.	0.50	DRYAN	PHH/LM	05/12/15	
XXX	0.30	CHECKED	Tommy Tong	05/12/15	
FRACTIONS	0.20				
ANGLES	5°				

FOR MATERIALS AND FINISHES SEE NOTES
REMOVE SHARP EDGES
DIMENSIONS
TOLERANCES
DRAWING FILE :

ANGLE OF PROJECTION
FIRST ANGLE

TITLE
Amphenol
Amphenol East Asia Limited

Stamped and formed contact,RR series

SIZE DRAWING NO. L777RRXXXP
SCALE NONE
SHEET 1 OF 1