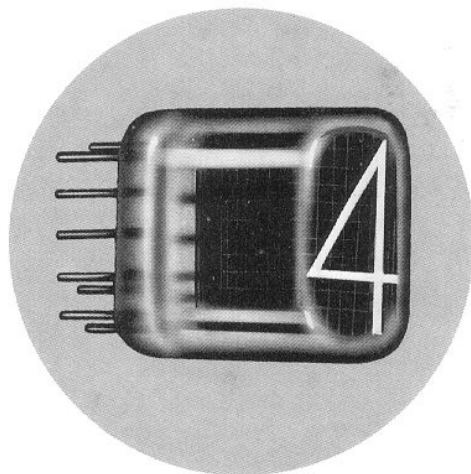


NL-4998 NUMERICAL READOUT TUBE

NL-4998 is a long-life, miniature rectangular Readout tube with .3" high characters 0-9. This most compact of all Readout tubes combines space saving with the high reliability, high readability, and long life of the neon filled cold cathode discharge tubes. It is particularly suitable where space is limited.



TECHNICAL INFORMATION

Ionization Voltage (Maximum)	170 Vdc
Supply Voltage (Minimum)	170 Vdc
Cathode Current	
Peak (Maximum)	2.5 mA
Average (Maximum)	2.0 mA
Average (Minimum)	1.0 mA
Prebias Limits	65V to 120V dc
Temperature Limits	-20°C to +55°C
(Reduced Life)	-65°C to +85°C
Life (Dynamic)	200,000 Hours
Weight	0.3 oz.
Mounting Position	Pins 6 & 12 vertically aligned with pin 6 on top

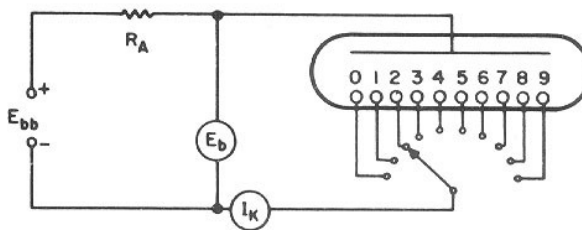
Recommended Operating Conditions:

Supply Voltage (E _{bb})	200V	250V	300V
Corresponding Anode Resistors (R _A)	36K	75K	110K

Note: Use of the highest voltage available with the appropriate resistor is recommended.

PIN CONNECTIONS

Pin No.	Character
1	2
2	3
3	4
4	5
5	6
6	Internal Connection
7	7
8	8
9	9
10	0
11	Anode
12	1
13	Internal Connection



TEST CONDITIONS

Printed in U.S.A. 6/68

NATIONAL ELECTRONICS, INC.

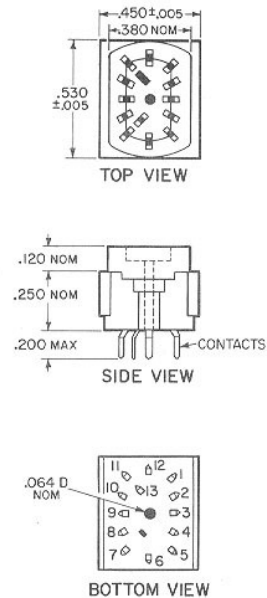
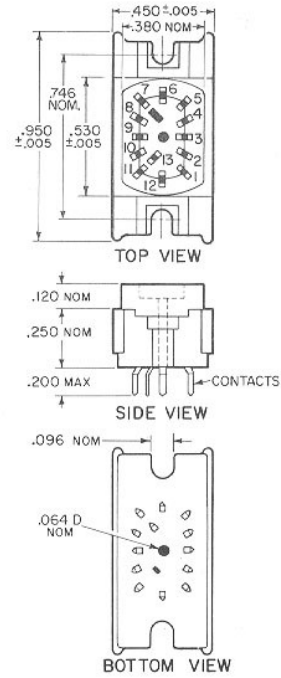
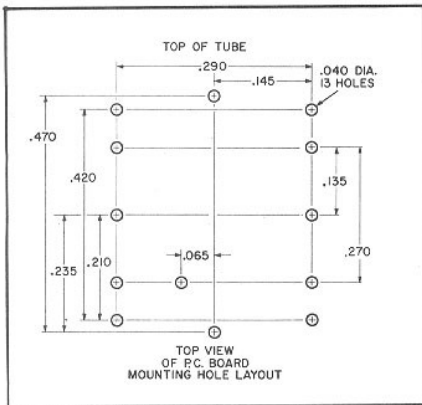
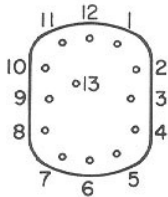
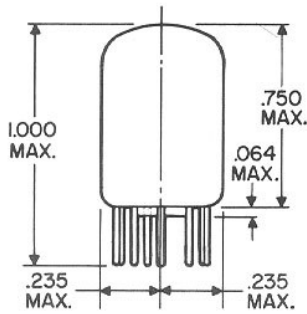
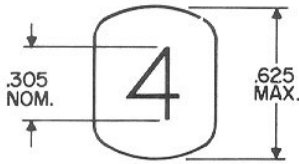
a varian subsidiary

GENEVA, ILLINOIS, 60134

TELEPHONE 312 232-4300
TWX 910 237-1685

NL-4998 NUMERICAL READOUT TUBE

OUTLINE DRAWING



NATIONAL ELECTRONICS, INC.

a varian subsidiary

GENEVA, ILLINOIS, 60134

TELEPHONE 312 232-4300
 TWX 910 237-1685