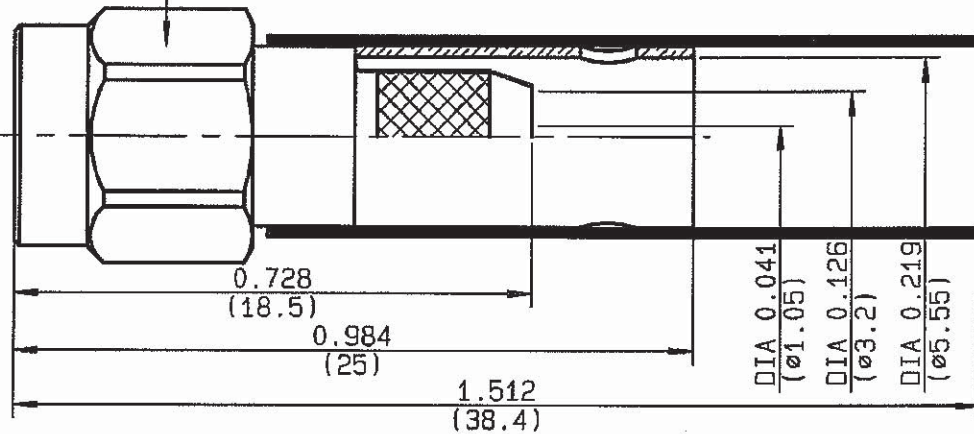


**STRAIGHT PLUG CRIMP TYPE
CABLE 5/50 D**

R125.076.000
SERIES SMA

Hex. .315/flats
Hex. 8/plats



| | |
|---------------------------------|---|
| NOMINAL IMPEDANCE | 50 Ω |
| FREQUENCY RANGE | 0-12.4 GHz |
| TEMPERATURE RATING | -65/+165 °C |
| V.S.W.R | 1.15 + .01 x F(GHz)Max |
| RF INSERTION LOSS | 0.06 \sqrt{F} (GHz) dB Max |
| VOLTAGE RATING | 335 Veff Max |
| DIELECTRIC WITHSTANDING VOLTAGE | 1000 Veff Min |
| INSULATION RESISTANCE | 5000 M Ω Mini |
| HERMETIC SEAL | NA Atm.cm ³ /s |
| LEAKAGE (pressurized only) | NA |
| MECHANICAL DURABILITY | 500 Cycles |
| WEIGHT | 3.8 gr |
| SPECIFICATION | AMD BA LEA 03 COC 9 MAG-202 (13/06/88) |

CABLES : **KX 23**
R6 142
R6 142 FTX
R6 223
R6 400

OTHERS CHARACTERISTICS

| | |
|----------------------------|---------------------|
| CABLE RETENTION | 204 N Mini |
| CENTER CONTACT RETENTION | |
| Axial force - mating end | NA N Mini |
| Axial force - opposite end | NA N Mini |
| Torque | NA cm.N Mini |
| RECOMMENDED TORQUES | |
| Mating | 100 cm.N |
| Panel nut | NA cm.N |
| Clamp nut | NA cm.N |

| CONNECTOR PARTS | MATERIALS | FINISH | (all values are given in micrometers) |
|-----------------|-----------------|------------------------|---------------------------------------|
| BODY | STAINLESS STEEL | GOLD 0.5 OVER NICKEL 2 | |
| OUTER CONTACT | | | |
| CENTER CONTACT | BRASS | GOLD 1.3 OVER NICKEL 2 | |
| INSULATOR | PTFE | - | |
| GASKET | SILICONE RUBBER | - | |
| OTHERS PIECES | STAINLESS STEEL | GOLD 0.5 OVER NICKEL 2 | |

GUILLOMIN

ISSUE
0623M

CREATION DATE
13/06/1988

FILE PART-NUMBER



RADIALL®

The information given here is subject to change without notice.
Design changes may be in order to improve the product.

Connect to the future

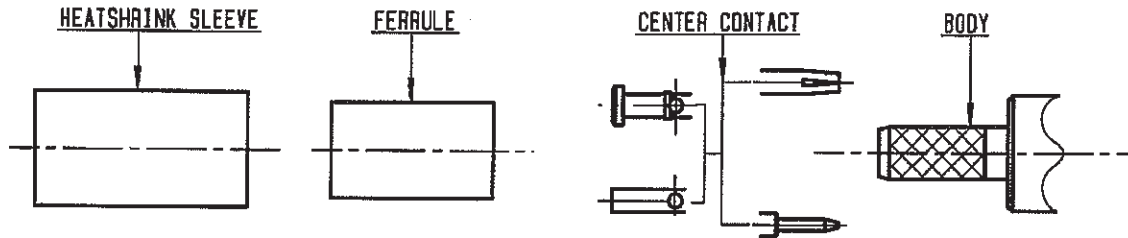


R125.076.000

ISSUE

0623M

SERIES
SMA

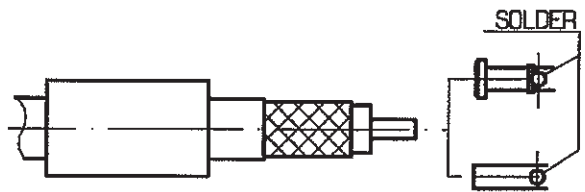


①
Slide ferrule and heatshrink sleeve onto cable .
Strip the cable .
-
-

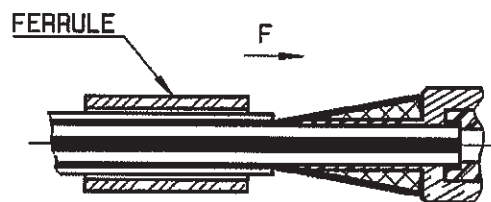


| Stripping | a | b | c | d | e |
|-----------|-------|-------|-------|---|-------|
| inch | 0.138 | 0.276 | 0.531 | 0 | 0.394 |
| mm | 3.5 | 7 | 13.5 | | 10 |

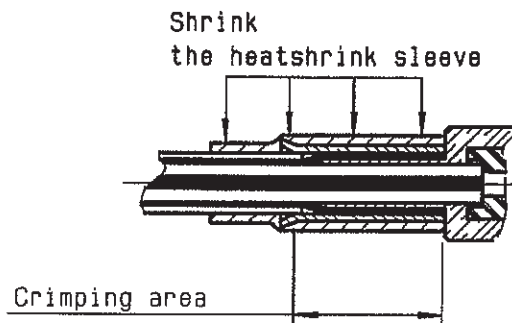
②
Slide center contact on until it bottoms against cable dielectric .
Solder center contact .
Clean soldered area .
-
-



③
Fan the braid .
Slide cable into body until it bottoms against insulator .
Slide ferrule over the braid .
(In direction F)



④
Crimp the ferrule with crimping tool R 282 223 000 (Hex. : 5.41) or crimping tool R 282 293 000 (M22520/5-01) + dies R 282 235 011 (M22520/5-11)
Cut the excess of braid if necessary
Slide sleeve over ferrule and heatshrink in place .
-
-



GUILLOMIN