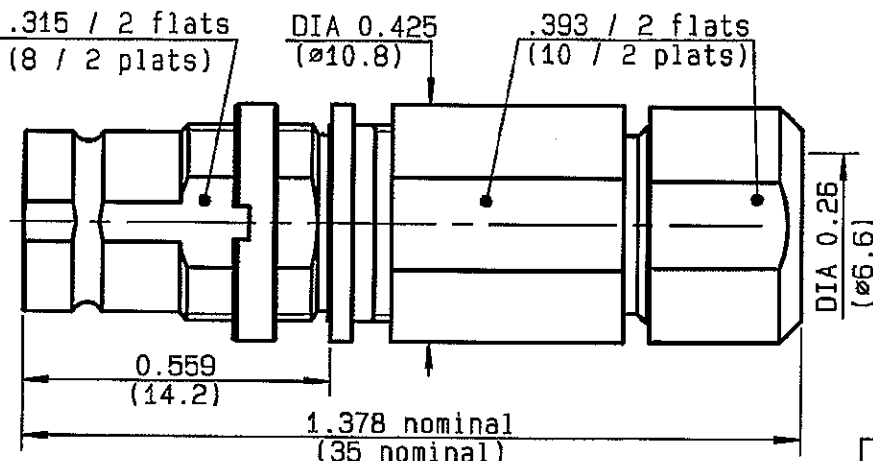
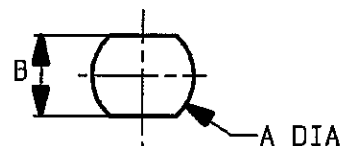


BULKHEAD JACK CLAMP TYPE

BULKHEAD JACK CLAMP



PERCAGE PANNEAU
MOUNTING HOLE



	MM		INCH	
	maxi	mini	maxi	mini
A	9.15	9.05	0.36	0.36
B	8.2	8.1	0.323	0.319

CABLES : -

CHARACTERISTICS

NOMINAL IMPEDANCE	75 Ω
FREQUENCY RANGE	0-1 GHz
TEMPERATURE RATING	-40/+155 °C
VSWR	1.2 + 0 x F(GHz)Max1
RF INSERTION LOSS	- √F(GHz) dB Max1
VOLTAGE RATING	330 Vrms Max
DIELECTRIC WITHSTANDING VOLTAGE	1500 Vrms min
INSULATION RESISTANCE	10000 MΩ min
HERMETIC SEAL	- 00/s - Atm.cm3/s
LEAKAGE (pressurized only)	- psi - MPa
WEIGHT	0 Oz 12.7 g

STANDARDISATION

CABLE RETENTION	0	lb min
	-	N
CENTER CONTACT RETENTION		
Axial force - mating end	6.74 ₃₀	lb min
		N
Axial force - opposite end	6.74 ₃₀	lb min
		N
Torque (Min)	0	Inch.oz
	-	cm.N
RECOMMENDED TORQUES		
Mating	0	Inch.lb
	-	cm.N
Panel nut	0	Inch.lb
	-	cm.N
Clamp nut	0	Inch.lb
	-	cm.N

CONSTRUCTION

CONNECTOR PARTS	MATERIALS	FINISH
BODY	BRASS	GOLD OVER NICKEL
OUTER CONTACT	-	-
CENTER CONTACT	BERYLLIUM COPPER	GOLD OVER NICKEL
INSULATOR	PTFE	-
COUPLING NUT	BRASS	NICKEL
-	-	-
-	-	-
-	-	-
-	-	-

ISSUE	REVISION No	DESCRIPTION	BY	DATE
-	-	-	-	-
-	-	-	-	-
G	99-07-009	Updated VPL	TRIPPIER	21-10-98

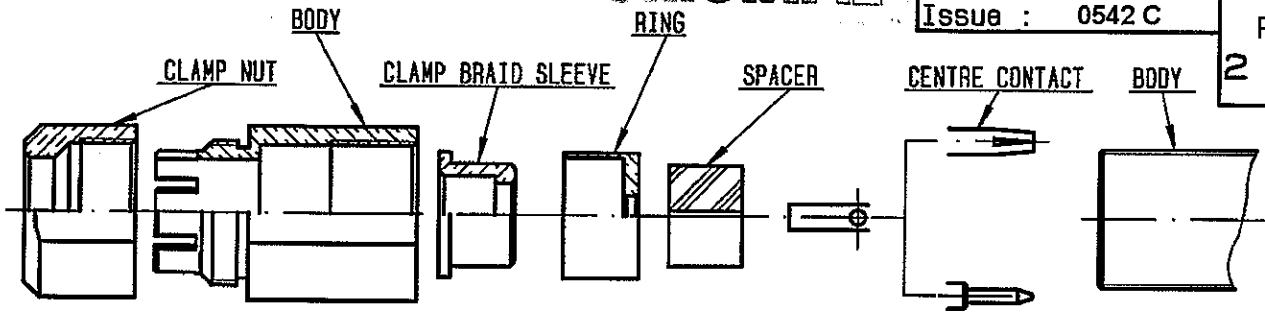
Initiated on -

The information given here is subject to change without notice. Design changes may be in order to improve the product.



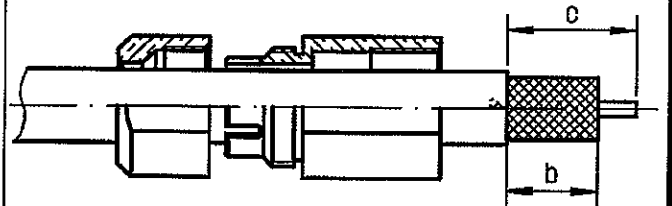
Approval by VIGNARD

FERRY



①

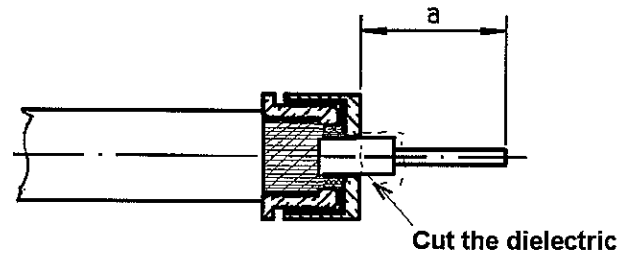
Slide the clamp nut and the body onto the cable.
Strip the cable.



Stripping	a	b	c	d	e
inch	0.394	0.394	0.906	-	-
mm	10	10	23	-	-

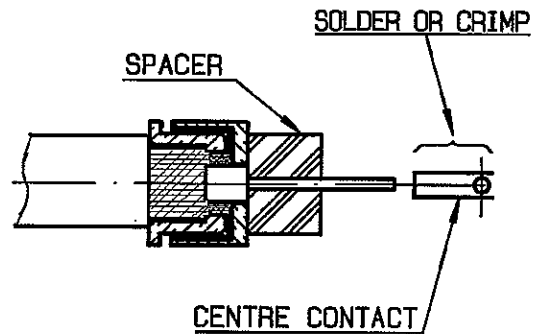
②

Slide the clamp braid sleeve.
Fold back braid and trim off surplus braid.
Slide the ring and cut the dielectric flush and cable core (dimension a)



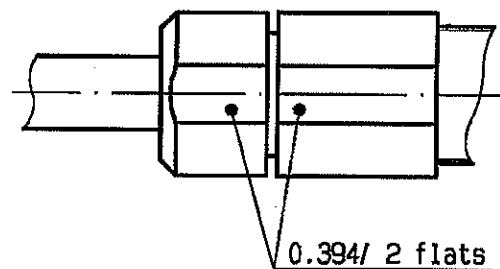
③

Slide the spacer.
Solder or crimp centre contact with crimping tool R282 281 000 (position 5) + positionner R282 968 000 (or crimping tool 22520/2-01 + positionner 22520/2-06)



④

Mount sub-assembly into the connector body and screw the body.
(recommended coupling torque 14.74 in.lb)
Mount and screw the clamp nut.
(recommended coupling torque 14.74 in.lb)



4112 9211