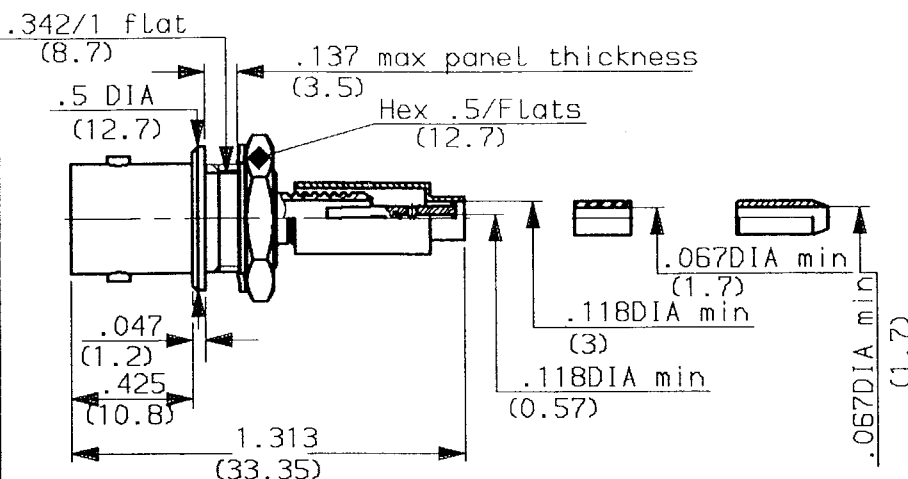


**STRAIGHT BULKHEAD JACK-CRIMP TYPE  
 CABLE 2.6/50**

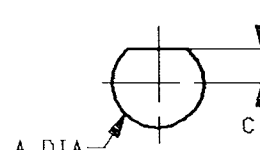
SERIES:

BNC

1 / 2



MOUNTING HOLE



	MM		INCH	
	mini	maxi	mini	maxi
A	9.65	9.75	.380	.383
C	3.96	4.04	.156	.159

weight oz (g)

CABLES : RG174 KX3

**CHARACTERISTICS**

NOMINAL IMPEDANCE	50	Ω
FREQUENCY RANGE	0-4	GHz
TEMPERATURE RATING	-65/+165	°C
VSWR	AD	Max
RF INSERTION LOSS	AD	√F dB Maxi
VOLTAGE RATING	335	Vrms Maxi
DIELECTRIC WITHSTANDING VOLTAGE	1000	Vrms mini
INSULATION RESISTANCE	5000	MΩ mini
HERMETIC SEAL	NA	cc/s - Atm.cm <sup>3</sup> /s
LEAKAGE (pressurized only)	NA	psi - MPa

**STANDARDISATION**

 CECC 22120 /BNC  
 CEI 169-08/BNC  
 MIL STD348-301/BNC

**CABLE RETENTION**

 8.8 Lb mini  
 40 N

**CENTER CONTACT RETENTION**

 Axial force - mating end 5.984 Lb mini  
 27.2 N

 Axial force - opposite end 5.984 Lb mini  
 27.2 N

 Torque (Min) NA  
 - Inch.oz  
 - cm.N

**RECOMMENDED TORQUES**

Mating	NA	Inch.Lb cm.N
Panel nut	22.125	Inch.Lb cm.N
Clamp nut	NA	Inch.Lb cm.N

**CONSTRUCTION**

CONNECTOR PARTS	MATERIALS	FINISH
BODY	BRASS	NICKEL
OUTER CONTACT	BRASS	NICKEL
CENTER CONTACT	BERYLLIUM COPPER	GOLD
INSULATORS	PTFE	-
-	-	-
-	-	-
-	-	-
-	-	-
-	-	-

ISSUE	REVISION No	DESCRIPTION	BY	DATE
9737	9506.015	braid clamp PTFE → Polyamide	Guerin	17.09.97

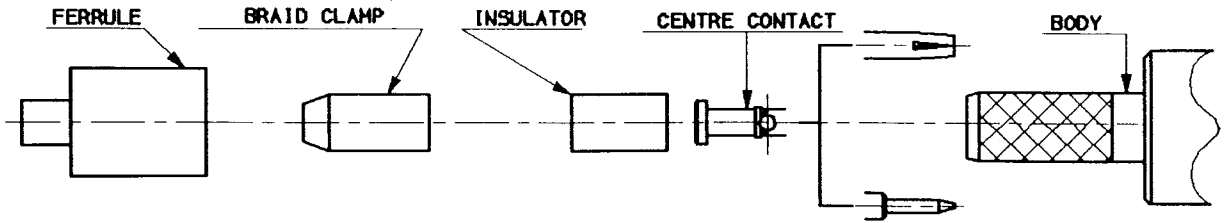
Initiated on 31-MAR-92

The information given here is subject to change without notice. Design changes may be in order to improve the product.



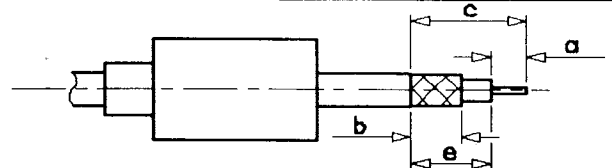
Superseded on

STRAIGHT BULKHEAD JACK-CRIMP TYPE  
CABLE 2.6/50



①

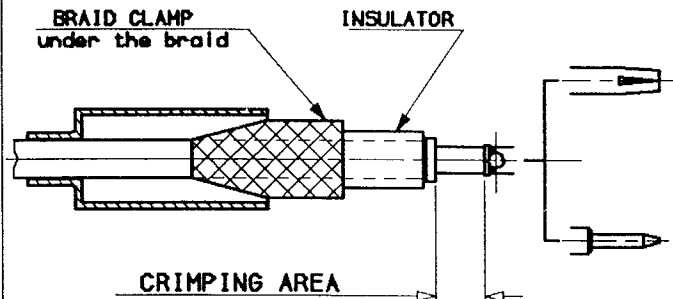
- 1-1 Slide onto the cable the ferrule
- 1-2 Strip the cable .
- 1-3 Fan the braid .



Stripping	a	b	c	d	e
Inch	.157	.393	.728	-	.57
mm	4	10	18.5	-	14.5

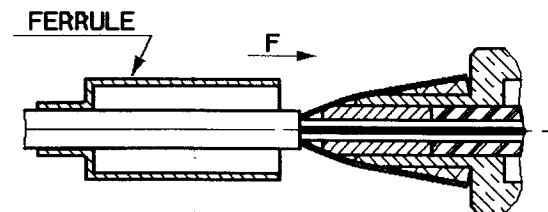
②

- 2-1 Slide the braid clamp and insulator between the dielectric and the braid .
- 2-2 Slide on the centre contact until it bottoms against cable dielectric .
- 2-3 Crimp centre contact , crimping tool R 282 223 000 (Hex. .068 ) or crimping tool M22520/5-01 + dies M22520/5-11



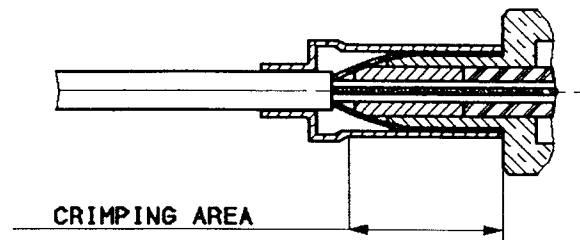
③

- 3-1 Slide cable into the body until bottoms against insulator .
- 3-2 Slide ferrule over the braid ( in direction F )



④

- 4-1 Crimp the ferrule with crimping tool R 282 223 000 (Hex. .213 ) or Crimping tool M22520/5-01 + dies M22520/5-11
- 4-2 Cut the excess of braid .



ISSUE	REVISION No	DESCRIPTION	BY	DATE
.	.	.	.	.
.	.	.	.	.
.	.	.	.	.

Initiated on 31-MAR-92  
Superseded on \_\_\_\_\_

The information given here is subject to change without notice. Design changes may be in order to improve the product.

