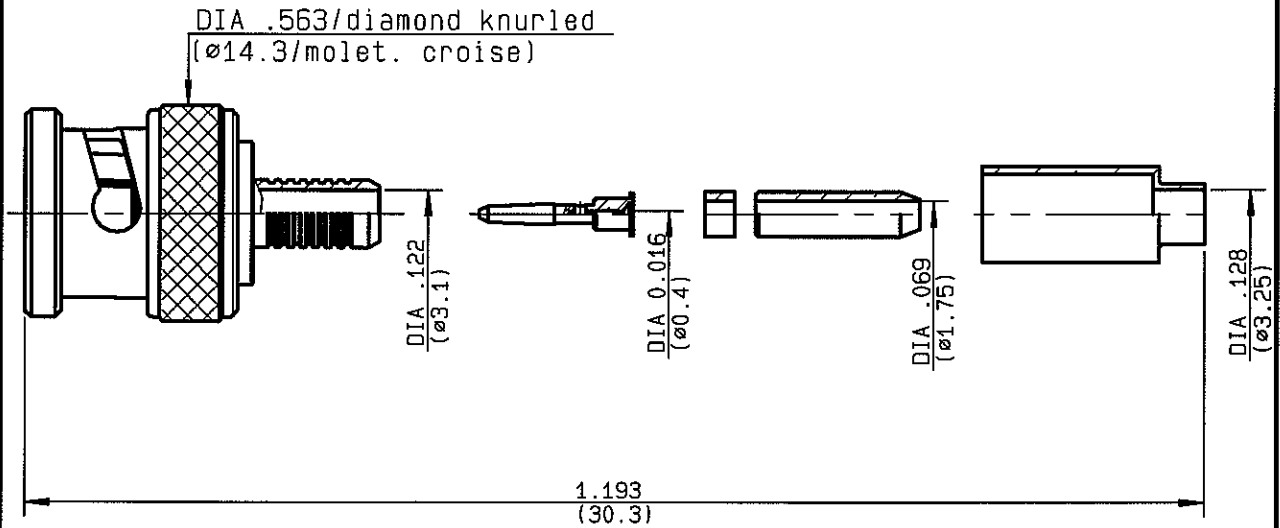


**STRAIGHT PLUG CRIMP TYPE  
CABLE 2.6/75 S**

**R142.076.000**  
SERIES **BNC 75**



NOMINAL IMPEDANCE	<b>75</b> Ω	CABLES : <b>RG 179</b>
FREQUENCY RANGE	<b>0-1.5</b> GHz	<b>RG 187</b>
TEMPERATURE RATING	<b>-65/+165</b> °C	
V.S.W.R	<b>1.30 + 0 x F(GHz)</b> Maxi	
RF INSERTION LOSS	<b>0.115</b> √F(GHz) dB Maxi	
VOLTAGE RATING	<b>335</b> Veff Maxi	
DIELECTRIC WITHSTANDING VOLTAGE	<b>1000</b> Veff Mini	
INSULATION RESISTANCE	<b>5000</b> M ΩMini	OTHERS CHARACTERISTICS
HERMETIC SEAL	<b>NA</b> Atm.cm <sup>3</sup> /s	CABLE RETENTION
LEAKAGE (pressurized only)	<b>NA</b>	<b>40</b> N Mini
MECHANICAL DURABILITY	<b>500</b> Cycles	CENTER CONTACT RETENTION
WEIGHT	<b>10</b> gr	Axial force - mating end
SPECIFICATION		<b>27</b> N Mini
		Axial force - opposite end
		<b>27</b> N Mini
		Torque
		<b>NA</b> cm.N Mini
		RECOMMENDED TORQUES
		Mating
		<b>NA</b> cm.N
		Panel nut
		<b>NA</b> cm.N
		Clamp nut
		<b>NA</b> cm.N

CONNECTOR PARTS	MATERIALS	FINISH	(all values are given in micrometers)
BODY	BRASS	NICKEL 2	
OUTER CONTACT			
CENTER CONTACT	BRASS	GOLD 0.5 OVER NICKEL 2	
INSULATOR	PTFE	-	
GASKET	SILICONE RUBBER	-	
OTHERS PIECES	BRASS	NICKEL 2	

ISSUE <b>0619 H</b>	CREATION DATE <b>19/09/1983</b>	FILE PART-NUMBER
------------------------	------------------------------------	------------------



PICTON

The information given here is subject to change without notice. Design changes may be in order to improve the product.

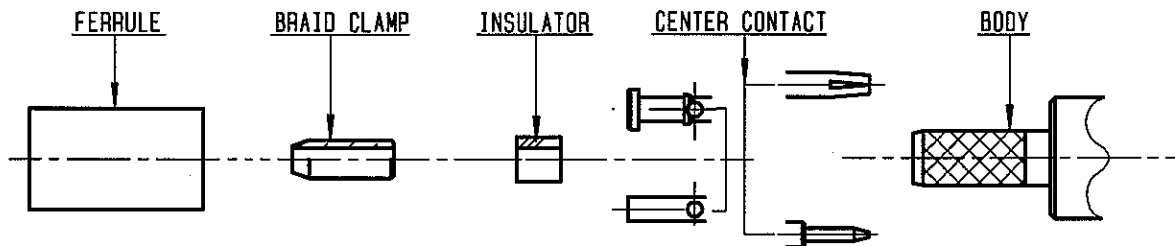
*Connect to the future*



**R142.076.000**

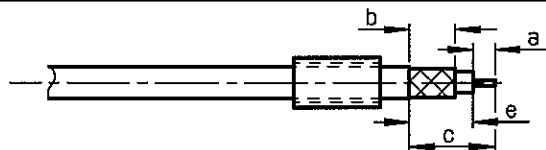
ISSUE 0619 H

SERIES BNC 75



①

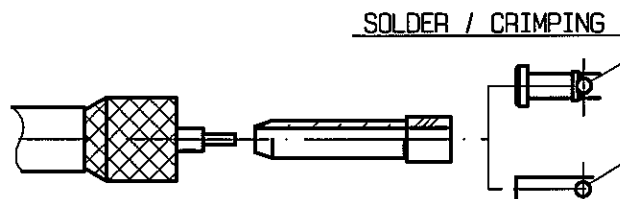
Slide ferrule onto cable .  
Strip the cable .



Stripping	a	b	c	d	e
inch	0.157	0.394	0.728	0	0.571
mm	4	10	18.5		14.5

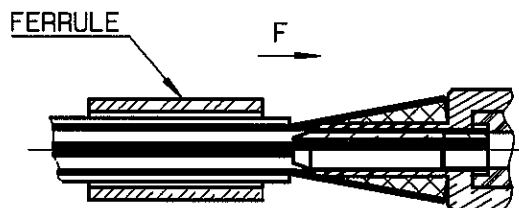
②

Fan the braid .  
Slide braid clamp and insulator between dielectric and braid .  
Slide center contact on until it bottoms against cable dielectric .  
Solder or crimp center contact .  
Crimping tool : R282 223 000 ( Hex. : 0.068 )  
or R282 293 000 ( M22520/5-01 )  
+ dies R282 235 011 ( M22520/5-11 )



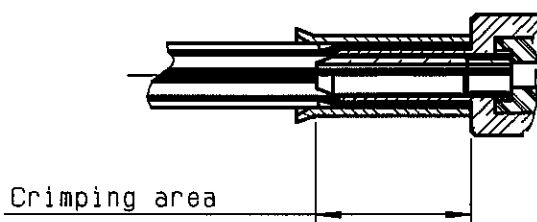
③

Slide cable into body until bottoms against insulator .  
Slide ferrule over the braid .  
(In direction F)



④

Crimp the ferrule with crimping tool R 282 223 000 ( Hex. : 0.213 ) or crimping tool R282 293 000 ( M22520/5-01 ) + dies R282 235 011 ( M22520/5-11 )  
Cut excess braid if necessary.



PICTON