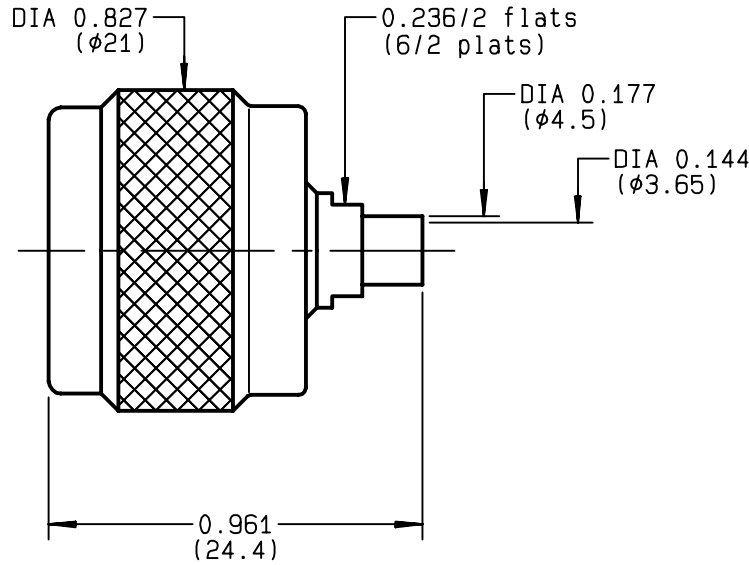


**STRAIGHT PLUG SOLDER TYPE  
CABLE .141**

**R161.051.000**  
**SERIES N**



|                                 |                                  |   |
|---------------------------------|----------------------------------|---|
| NOMINAL IMPEDANCE               | <b>50</b> Ω                      | CABLES : <b>KS 2</b>                        |
| FREQUENCY RANGE                 | <b>0-11</b> GHz                  | <b>RG 402</b>                               |
| TEMPERATURE RATING              | <b>-55/+105</b> °C               |   |
| V.S.W.R                         | <b>1.15</b> + x F(GHz)Maxi       |   |
| RF INSERTION LOSS               | <b>0.048</b> √F(GHz) dB Maxi     |   |
| VOLTAGE RATING                  | <b>335</b> Veff Maxi             |   |
| DIELECTRIC WITHSTANDING VOLTAGE | <b>1000</b> Veff Mini            |   |
| INSULATION RESISTANCE           | <b>5000</b> MΩMini               | OTHERS CHARACTERISTICS                      |
| HERMETIC SEAL                   | <b>NA</b> Atm.cm <sup>3</sup> /s | CABLE RETENTION <b>500</b> N Mini           |
| LEAKAGE (pressurized only)      | <b>NA</b>                        | CENTER CONTACT RETENTION                    |
| MECHANICAL DURABILITY           | <b>500</b> Cycles                | Axial force - mating end <b>NA</b> N Mini   |
| WEIGHT                          | <b>24.86</b> gr                  | Axial force - opposite end <b>NA</b> N Mini |
| SPECIFICATION                   |                                  | Torque <b>NA</b> cm.N Mini                  |
|                                 |                                  | RECOMMENDED TORQUES                         |
|                                 |                                  | Mating <b>130</b> cm.N                      |
|                                 |                                  | Panel nut <b>NA</b> cm.N                    |
|                                 |                                  | Clamp nut <b>NA</b> cm.N                    |

| CONNECTOR PARTS | MATERIALS       | FINISH                 | (all values are given )<br>in micrometers |
|-----------------|-----------------|------------------------|---|
| BODY            | BRASS           | GOLD 0.2 OVER NICKEL 2 |   |
| OUTER CONTACT   |                 |                        |   |
| CENTER CONTACT  | BRASS           | GOLD 0.5 OVER NICKEL 2 |   |
| INSULATOR       | PTFE            | -                      |   |
| GASKET          | SILICONE RUBBER | -                      |   |
| OTHERS PIECES   | BRASS           | BBR 2                  |   |

|                |                   |                  |
|----------------|-------------------|------------------|
| ISSUE          | CREATION DATE     | FILE PART-NUMBER |
| <b>0248K01</b> | <b>08/02/1993</b> | <b>EPC 96-07</b> |



BONOMINI

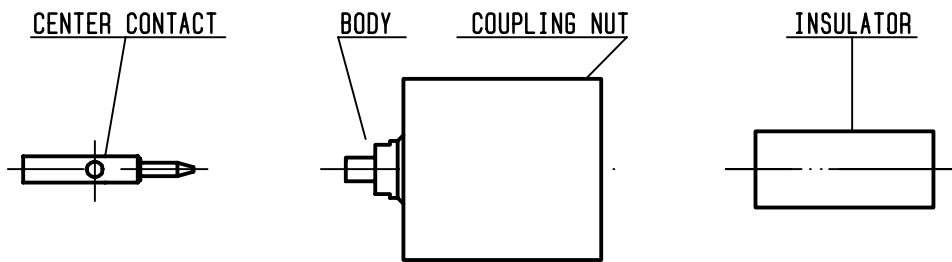
The information given here is subject to change without notice.  
Design changes may be in order to improve the product .

*Connect to the future*



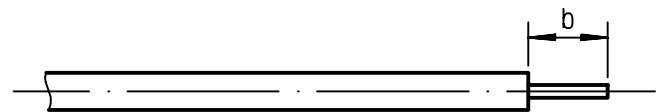
**R161.051.000**

ISSUE **0248K01** SERIES **N**



①

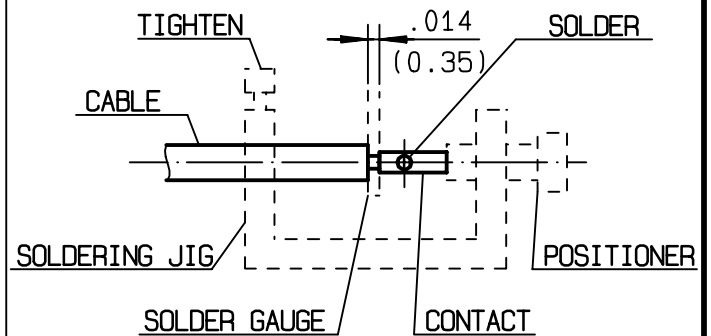
Take the tool kit : R 282 125 010 .  
Strip the dielectric of the cable .  
Stripping tool cable : R 282 053 .  
Trimmer : R 282 066 010 .  
Clean the cable .  
-



| Stripping | a | b       | c | d | e |
|-----------|---|---------|---|---|---|
| inch      | 0 | 0.177 0 | 0 | 0 | 0 |
| mm        |   | 4.5     |   |   |   |

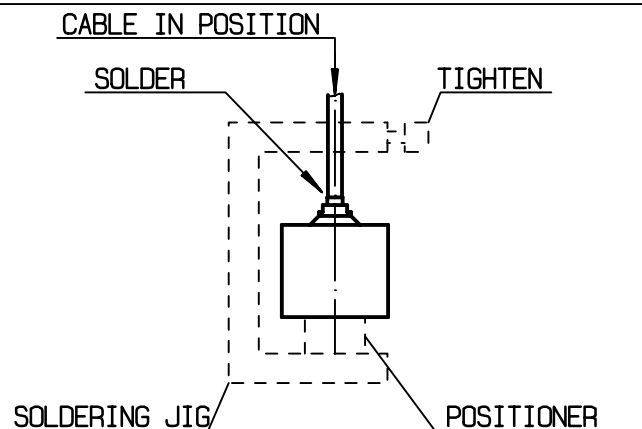
②

Screw the positioner R 282 744 261 onto the soldering jig R 282 740 030 .  
Slide contact into positioner .  
Insert solder gauge R 282 862 070 between contact and cable .  
Tighten and solder the contact .



③

After cooling remove cable assembly from the jig .  
Screw positioner R 282 744 340 into the connector .  
Slide cable into the connector until it bottoms against positioner R 282 744 340 .  
Tighten .  
Put 3 rings of solder around the cable and solder .



④

After cooling remove cable assembly from the jig .  
Screw female dielectric insert tool onto connector and cut the excess of dielectric with the dielectric recess tool R282 915 030 .  
Insert insulator with the dielectric plunger .  
Dielectric insert tool and dielectric plunger : R282 730 161 .

