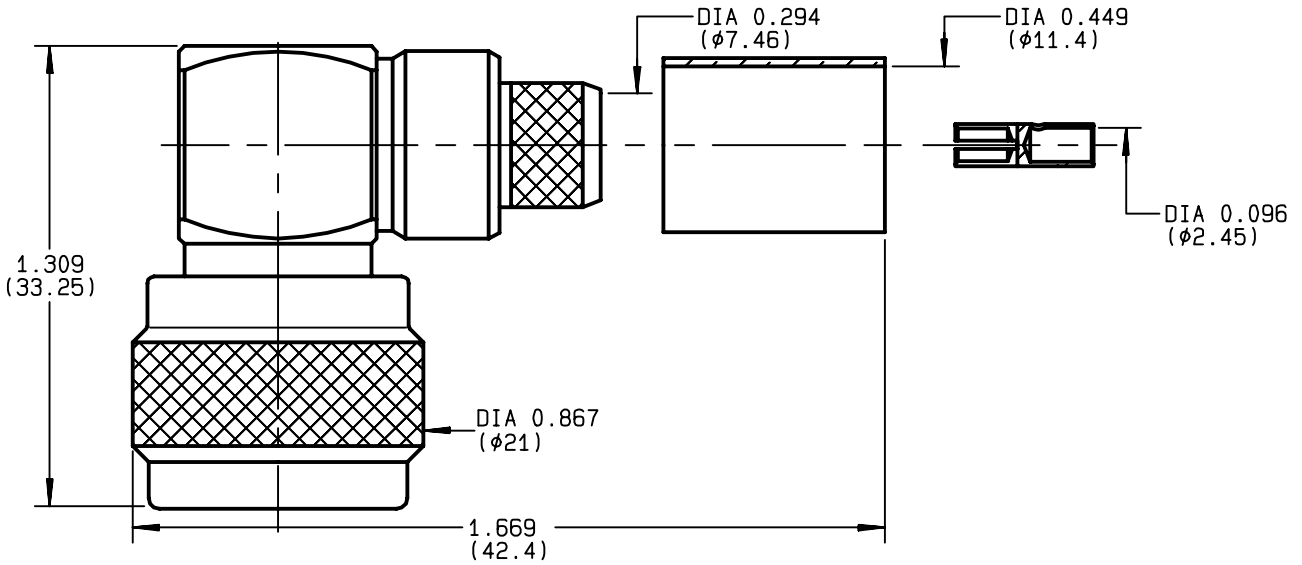


**RIGHT ANGLE PLUG FULL CRIMP-TYPE
CABLE 11/50 D**

R161.187.000
SERIES N



NOMINAL IMPEDANCE	50 Ω	CABLES : KX 13
FREQUENCY RANGE	0-11 GHz	RG 214
TEMPERATURE RATING	-55/+155 °C	RG 225
V.S.W.R	1.40* + x F(GHz)Maxi	
RF INSERTION LOSS	0.07 √F(GHz) dB Maxi	
VOLTAGE RATING	1400 Veff Maxi	
DIELECTRIC WITHSTANDING VOLTAGE	2500 Veff Mini	
INSULATION RESISTANCE	5000 MΩMini	OTHERS CHARACTERISTICS
HERMETIC SEAL	NA Atm.cm ³ /s	CABLE RETENTION
LEAKAGE (pressurized only)	NA	400 N Mini
MECHANICAL DURABILITY	500 Cycles	CENTER CONTACT RETENTION
WEIGHT	46 gr	Axial force - mating end
SPECIFICATION	* 0-9 GHz.	27 N Mini
		Axial force - opposite end
		27 N Mini
		Torque
		NA cm.N Mini
		RECOMMENDED TORQUES
		Mating
		130 cm.N
		Panel nut
		NA cm.N
		Clamp nut
		NA cm.N

CONNECTOR PARTS	MATERIALS	FINISH	(all values are given in micrometers)
BODY	BRASS	BBR 2	
OUTER CONTACT	BRASS	BBR 2	
CENTER CONTACT	BRASS	GOLD 0.5 OVER NICKEL 2	
INSULATOR	PTFE	-	
GASKET	SILICONE RUBBER	-	
OTHERS PIECES	BRASS	BBR 2	

ISSUE	CREATION DATE	FILE PART-NUMBER
9820B01	18/02/1993	EPC 96-07



BONOMINI

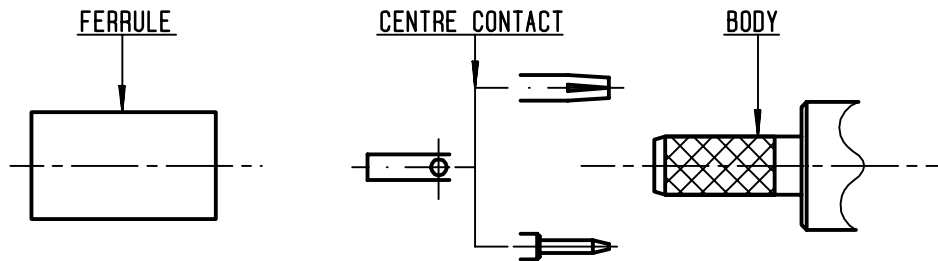
The information given here is subject to change without notice.
Design changes may be in order to improve the product .

Connect to the future



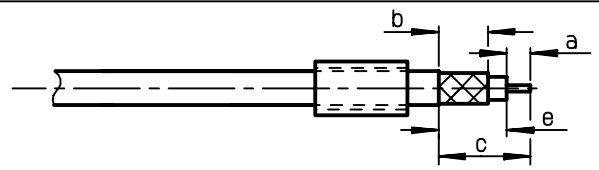
R161.187.000

ISSUE **9820B01** SERIES **N**



①

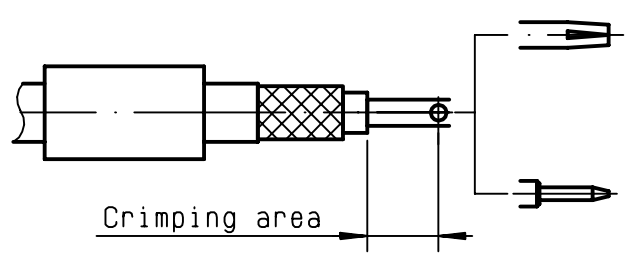
Slide onto the cable the ferrule .
-
Strip the cable .
-
-



Stripping	a	b	c	d	e
inch	0.177	0.315	0.591	0	0.413
mm	4.5	8	15		10.5

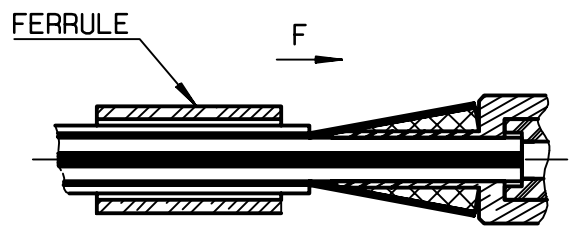
②

Slide on centre contact until it bottoms against cable dielectrique .
Crimp centre contact , crimping tool R 282 231 000 (Hex. : .10) or crimping tool R 282 293 000 (M22520/5-01) + dies R 282 235 116 (Y 116 DANIELS) .
-
-



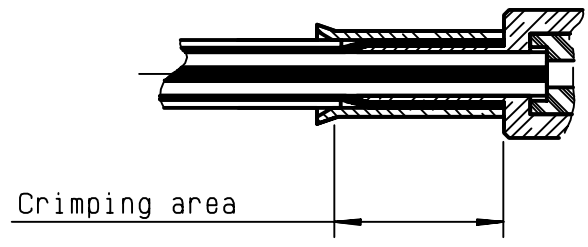
③

Fan the braid .
Slide cable into the body until bottoms against insulator .
Slide ferrule over the braid .
(In direction F)



④

Crimp the ferrule with crimping tool R 282 231 000 (Hex. : .415) or crimping tool R 282 293 000 (M22520/5-01) + dies R 282 235 116 (Y 116 DANIELS) .
Cut the excess of braid .
-
-



BONOMINI