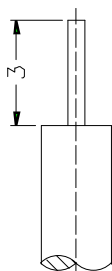
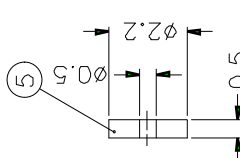
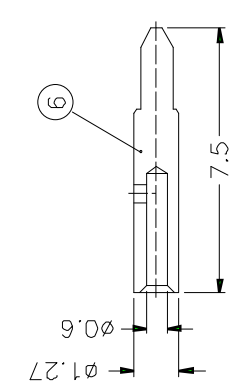
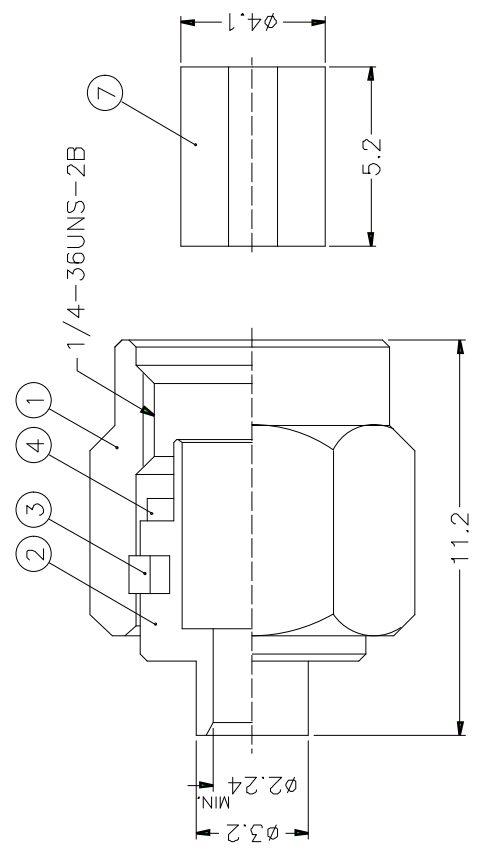


F 8 7 6 5 4 3 2 1 F E D C B A

REVISIONS	
ISS	DESCRIPTION\PER REQUEST\DATE



RECOMMENDED  
CABLE STRIPPING DIM'S

- NOTES: FINISH (PLATING THICKNESS IN MICRO-INCHES)
- BRASS PER QQ-B-626
  - GOLD PL. 3 MIN. THICK OVER NICKEL PL. 100 MIN. THICK OVER COPPER STRIKE
  - GOLD PL. 50 MIN. THICK OVER NICKEL PL. 100 MIN. THICK OVER COPPER STRIKE
  - BERYLLIUM COPPER PER QQ-C-530
  - TEFLON MIL-P-19468

NO.	DESCRIPTION	MATERIAL	FINISH	Q'TY	DRAWING NO.
7	INSULATOR	NATURAL		1	SMA5081-5T-50
6	CONTACT PIN	NOTE 3		1	SMA5081-6-127/06
5	INSULATOR	NATURAL		1	SMA1181A2-5T-50
4	GASKET	SILICONE	RED	1	GS-6/43X06
3	RETAINER RING	NATURAL		1	SMA5000-4-B
2	BODY	NOTE 1		1	SMA5081-2-32/224-A
1	SHELL	NOTE 2		1	SMA5000-1-C
NO.	DESCRIPTION	MATERIAL	FINISH	Q'TY	DRAWING NO.

DIMENSIONS ARE IN MILLIMETERS UNLESS OTHERWISE SPECIFIED TOLERANCES		PART NO.	SMA1181A2-3GT50G-11-50
0.5-6	= ±0.2	APPROVED	DATE
6-30	= ±0.4	CHECKED	DATE
30-120	= ±0.6	DRAWN	DATE
120-315	= ±1		
315-1000	= ±1.6		
1000-2000	= ±2.4		
SCALE	5/1	ISSUE	A
FILE NO.			

# Amphenol

TITLE SMA SEMI-RIGID PLUG  
(FOR .085", .086")  
DRAWING NO. KJ-SMA1181A2-3GT50G-.085-50  
ITEM NO.

1 2 3 4 5 6 7 8