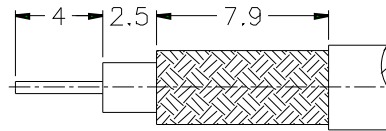
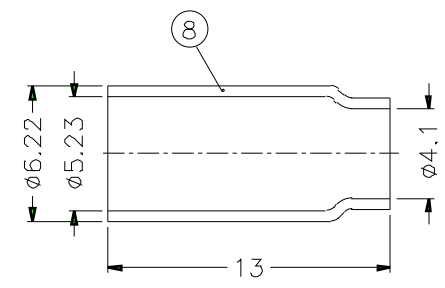
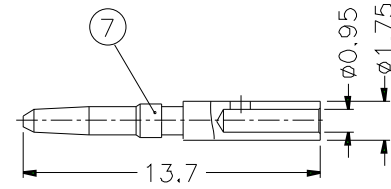
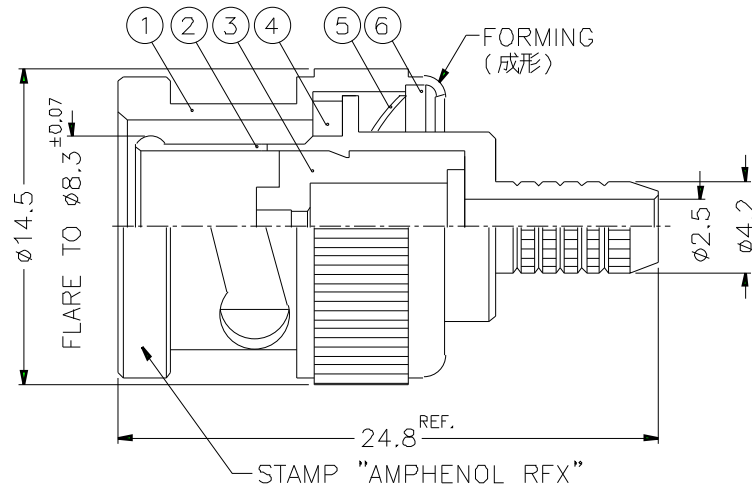


1		2		3		4		5		6		7		8	
REVISIONS															
ISS	ZONE	DESCRIPTION\PER REQUEST\DATE													



RECOMMENDED
CABLE STRIPPING DIM'S



NOTES: FINISH (PLATING THICKNESS IN MICRO-INCHES)

1. BRASS PER QQ-B-626
2. BRASS PER QQ-B-613
3. NICKEL PL. 100 MIN. THICK OVER COPPER STRIKE
4. NICKEL PL. 200 MIN. THICK OVER COPPER STRIKE
5. GOLD PL. 3 MIN. THICK OVER NICKEL PL. 100 MIN. THICK OVER COPPER STRIKE
6. TEFLON MIL-P-19468

- CABLES: -L910/34
 -L910/39
 -BT 3002
 -TR-SP.125
 -TR-SP.127
 -NORTELLRA 750-304541

1. CRIMPED FERRULE
 HEX CRIMP SIZE .213"
2. CRIMPED CONTACT PIN
 413 SP 00 (MIL-C-22520/2)
 ADJUST TO 5
 (CABLE BT 3002 ADJUST TO 3)

NO.	DESCRIPTION	MATERIAL	FINISH	Q'TY	DRAWING NO.
8	FERRULE	COPPER	NOTE 3	1	2A-167-34
7	CONTACT PIN	NOTE 1	NOTE 5	1	B1121A1-011-7-175/095-B
6	WASHER	NOTE 2	NOTE 3	1	WS-128/9X08
5	SPRING	SK5	NOTE 4	1	B50000-6
4	GASKET	RUBBER	RED	1	GS-115/8X15
3	INSULATOR	NOTE 6	NATURAL	1	B1121A1-011-3T-75
2	BODY	NOTE 1	NOTE 3	1	B1121A1-011-2-42/25
1	SHELL	NOTE 1	NOTE 3	1	B50000-1-B

DIMENSIONS ARE IN MILLIMETERS			PART NO. SX 49 0534	
UNLESS OTHERWISE SPECIFIED TOLERANCES			APPROVED	DATE
0.5-6	= ±0.2			10-11-01'
6-30	= ±0.4		CHECKED	DATE
30-120	= ±0.6			10-11-01'
120-315	= ±1		DRAWN	DATE
315-1000	= ±1.6			10-11-01'
1000-2000	= ±2.4			
SCALE	3/1	ISSUE	A	
FILE NO.				

Amphenol	
TITLE BNC CRIMP PLUG	
DRAWING NO.	
ITEM NO.	

1		2		3		4		5		6		7		8	
---	--	---	--	---	--	---	--	---	--	---	--	---	--	---	--