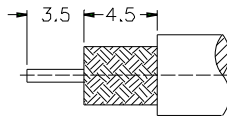
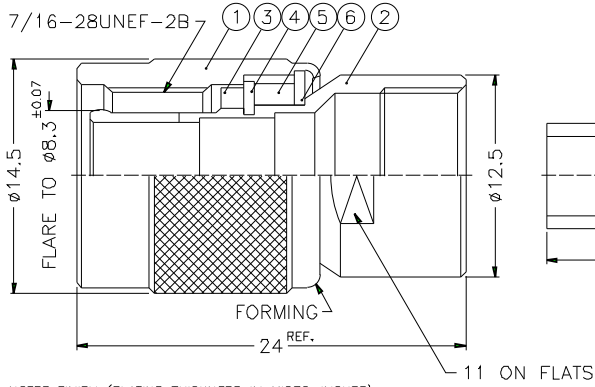


1 2 3 4 5 6 7 8

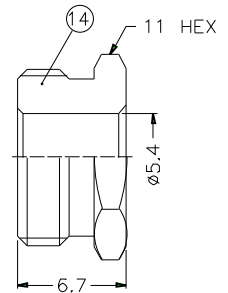
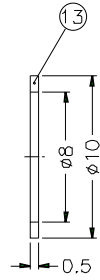
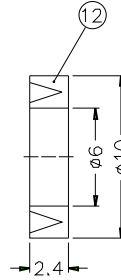
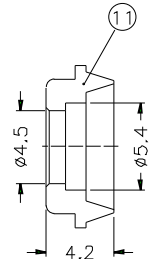
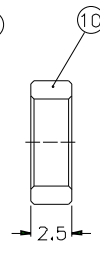
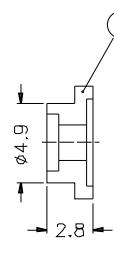
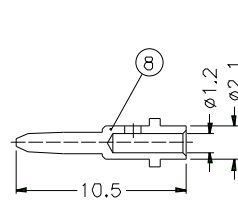
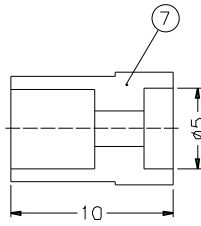
REVISIONS		
ISS	ZONE	DESCRIPTION \ PER REQUEST \ DATE



RECOMMENDED CABLE STRIPPING DIM'S



NOTES: FINISH (PLATING THICKNESS IN MICRO-INCHES)  
 1. BRASS PER QQ-B-626  
 2. BRASS PER QQ-B-613  
 3. NICKEL PL. 100 MIN. THICK OVER COPPER STRIKE  
 4. GOLD PL. 3 MIN. THICK OVER NICKEL PL. 100 MIN. THICK OVER COPPER STRIKE



14	HEX NUT	NOTE 1	NOTE 3	1	B5200-14-11/54
13	WASHER	NOTE 2	NOTE 3	1	WS-10/8X05
12	GASKET	SILICONE	RED	1	B5200-12
11	BRAID CLAMP	NOTE 1	NOTE 3	1	B5200-11-54/45-B
10	RING	NOTE 1	NOTE 3	1	B5200-10
9	INSULATOR	DELIN	NATURAL	1	B5200-9
8	CONTACT PIN	NOTE 1	NOTE 4	1	B5200-8-21/12
7	INSULATOR	DELIN	NATURAL	1	B5200-7-50
6	WASHER	NOTE 2	NOTE 3	1	WS-128/9X08
5	RING	DELIN	NATURAL	1	T50000-6-A
4	RETAINER RING	NOTE 1	NOTE 3	1	B50000-5
3	GASKET	RUBBER	RED	1	GS-105/8X15
2	BODY	NOTE 1	NOTE 3	1	B5200-2-A
1	SHELL	NOTE 1	NOTE 3	1	T50000-1-B

DIMENSIONS ARE IN MILLIMETERS  
 UNLESS OTHERWISE SPECIFIED TOLERANCES  
 0.5-6 = ±0.2  
 6-30 = ±0.4  
 30-120 = ±0.6  
 120-315 = ±1  
 315-1000 = ±1.6  
 1000-2000 = ±2.4

PART NO.	T1141A1-ND3G-1-50
APPROVED	DATE 10-11-01'
CHECKED	DATE 10-11-01'
DRAWN	DATE 10-11-01'
FILE NO.	

<b>Amphenol</b>	
TITLE	TNC CLAMP PLUG (FOR RG-58C/U, 58/U, 142A/U, 223/U)
DRAWING NO.	KJ-T1141A1-ND3G-58U-50
ITEM NO.	

1 2 3 4 5 6 7 8